



# AAMPO Demographic Forecasting Wrap Up Meeting

AAMPO Demographic Committee

April 6, 2021

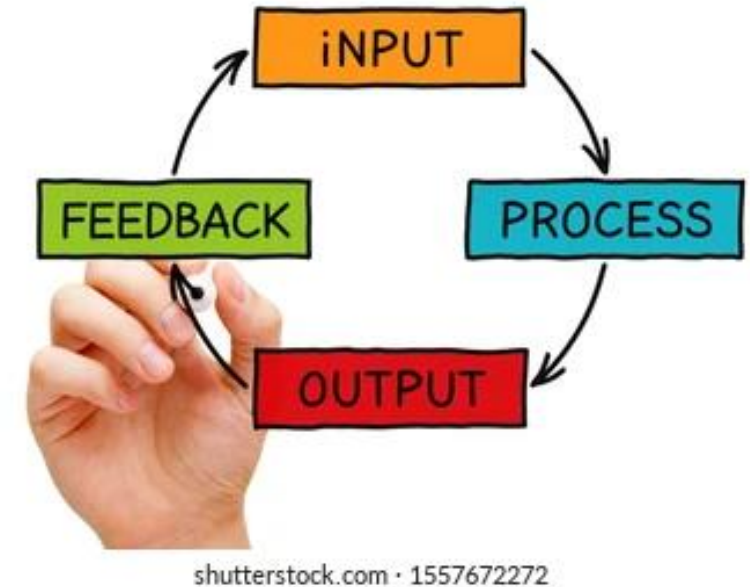


# Meeting Purpose



Showcase the results of your input and hard work

- **How will it be used?**
  - The forecast you guided and shaped will be used by AAMPO for the next several years to help inform transportation planning in the region.
- **What are the impacts?**
  - Your demographic forecast will impact transit ridership forecasts, the scoring of highway projects for inclusion into the MTP and many transportation decision in the upcoming years.



# AAMPO Demographic Process: Timeline



## Kickoff Meeting

You are invited to participate in the Demographic Committee. You will be asked to review materials on the region prior to the kickoff meeting and provide feedback. This meeting will kickoff the Demographic Committee to provide you information and take your early feedback on the region on December 3, 2020 from 2:00pm - 4:00pm.



## Exercise 1: Opportunities and Constraints Review

In the week of December 7, 2020 you will be asked to review the information assembled from the kickoff meeting and help finalize the opportunities and constraints



## Exercise 2: Demographic Evaluation and Allocation

In the week of December 14, 2020 you will be asked to allocate the regional growth to subarea level and development timelines for the region.



## Exercise 3: Demographic Forecasts Review

In the week of January 18, 2021 you will be asked to provide feedback on the forecast year demographics.



## Final Presentation of Demographics

In the week of April 5, 2021 the project team will present the forecast year demographics to the Demographic Committee.

# Demographic Committee Local Experts



Who was I working with?

First Name	Last Name	Agency
Sarah	Serpas	City of San Antonio Planning
Veronica	Garcia	City of San Antonio, Center City Development and Operation
Tom	Hornseth	Comal County Engineer
Ismael	Segovia	City of Seguin
Jeff	Carroll	City of Boerne
Christina	Delacruz	City of San Antonio
Darcie	Schipull	TxDOT San Antonio District
Garry	Ford	City of New Braunfels
Manjiri	Akalkotkar	VIA Metropolitan Transit
Manny	Longoria	City of Converse
Richard	Milk	San Antonio Housing Authority (SAHA)

# Demographic Committee Local Experts



Who else did we talk to?

First Name	Last Name	Agency
Johnette	Dixon	Chief Appraiser, Medina County Appraisal District
Britni	Van Curan	Atascosa County 9-1-1 Rural Addressing
Dawn	Polasek Barnett	Wilson County Tax Assessor- Collector
Leo	Gomez	Brooks AFB
Rene	Gonzalez	San Antonio Water System
		Northside ISD representative
		Northeast ISD representative
		Medina Valley ISD representative
Michael	Amezquita	Chief Appraiser, Bexar County Appraisal District



# Overview of Demographic Forecasting and Region

# Required Travel Demand Model Inputs

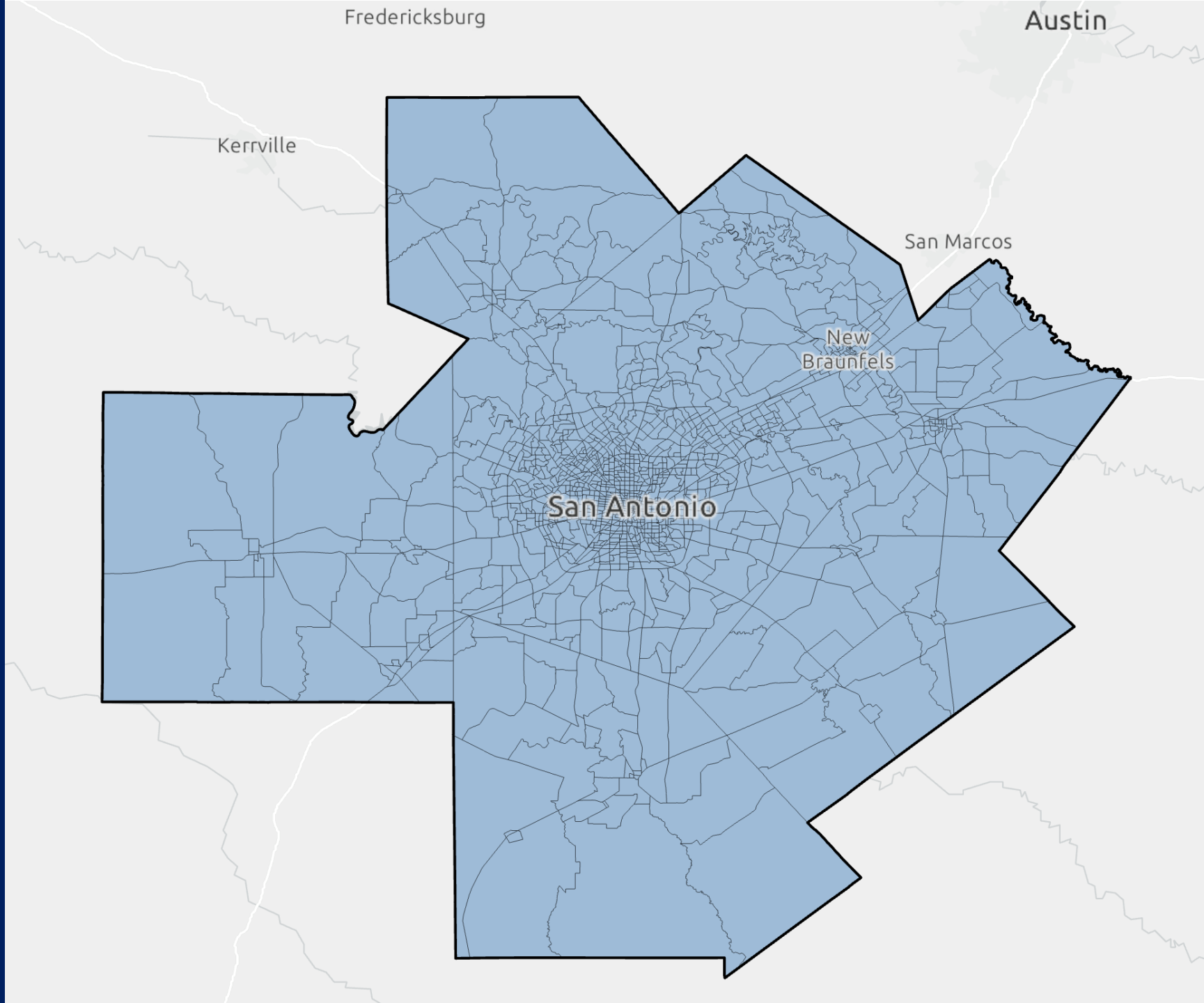


- Population (number of Households)
- Household size
- Employment by type: Basic, Retail, Service, and Education
- Median household income
- Special generators





# AAMPO Demographic Starting Point



# Available Data



- American Community Survey (ACS) - 5-year data and 1-year data
- 2017 Integrated Postsecondary Education Data System (IPEDS)
- 2018 Texas Education Agency (TEA)
- 2018 National Center for Education Statistics (NCES)
- 2020 point-level employment data by NAICS code (infoUSA)
- AAMPO 2015 TAZ-level estimates
- Google Earth satellite imagery
- GIS layers showing land availability, city/municipality future plans, zoning, development type, and developability of vacant land

# Base Year (2020) Demographic Process



1. County control totals
2. Disaggregate based upon InfoUSA point level employment data and Census (ACS data as block group level)
3. Estimate median household income from ACS data
4. Review existing special generators
5. Local experts to finish providing feedback on opportunities and constraints started during the kickoff meeting.
6. Base year Demographics
7. Local experts to provide feedback on **opportunities and constraints**
8. Local experts to provide feedback on **subarea allocation** of households, population, employment by type
9. Local experts to provide opinions on which areas should develop first and the **timing of development** by subarea and county. This information will be used by ATG to guide the estimation of demographics for intermediate years.
10. Local Expert **Review** of final 2050 TAZ level demographics



Your Input

# AAMPO Mobility 2050 Delphi Website



<https://aampo-mobility-2050-atginc.hub.arcgis.com/pages/demographic-results>



AAMPO Mobility 2050

Opportunities and Constraints

Demographic Evaluation

Demographic Results

## AAMPO Mobility 2050

You're invited to join the San Antonio Region Demographic Committee!

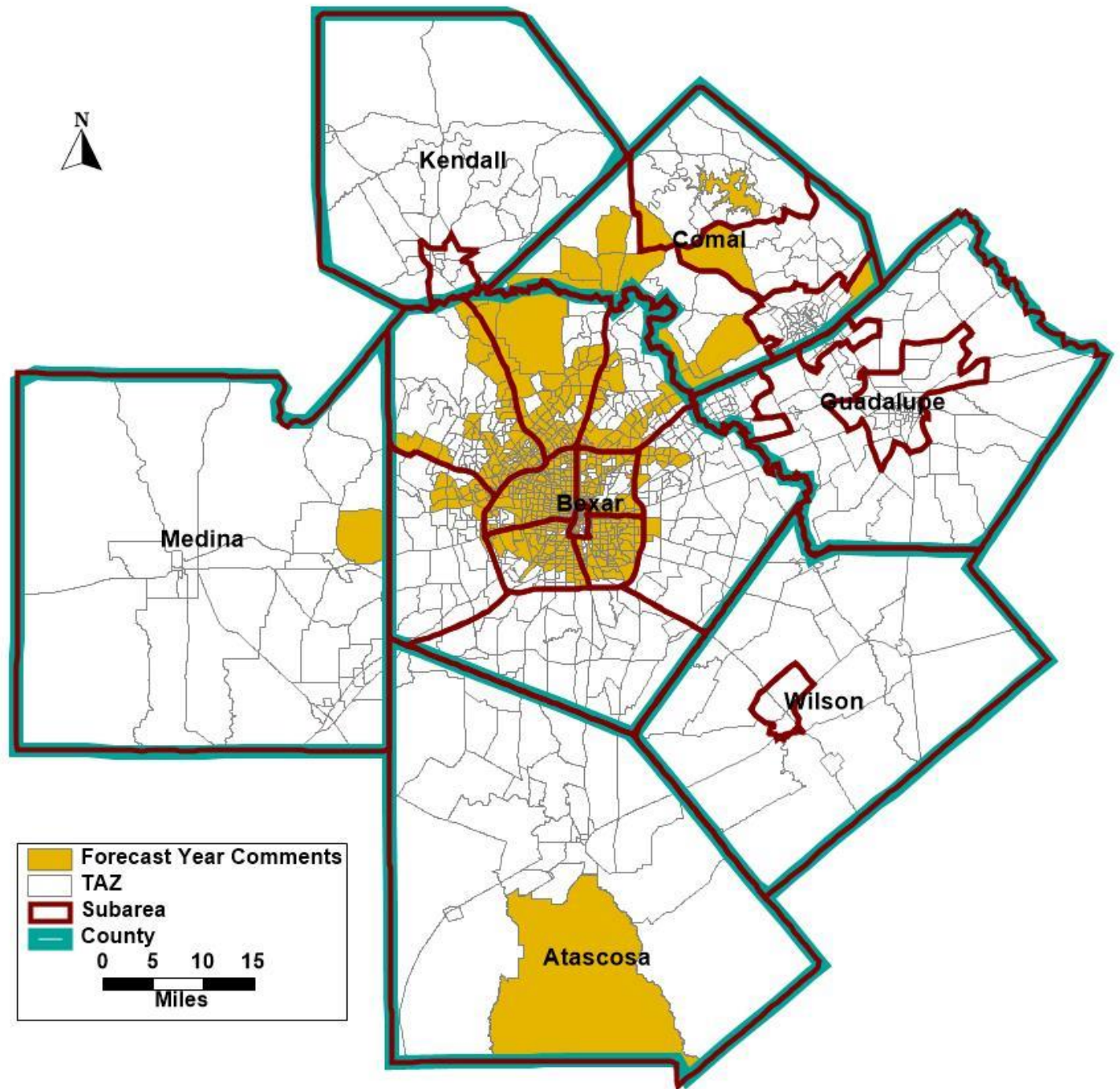
Welcome to the website for the San Antonio Region Demographic Committee! The Alamo Area Metropolitan Planning Organization (AAMPO) is updating the Travel Demand Model. The Model is a major tool used in directing future transportation investments as the San Antonio Region grows - determining where limited funding for transportation projects should be targeted. A key part of the process of updating the model is to develop accurate short- and long-range population and employment forecasts for the San Antonio Region. To ensure that we get the most accurate forecast possible, we are asking local leaders with knowledge and expertise in certain fields to participate in helping us develop these important demographic forecasts. You have been selected by the AAMPO to participate in the 2050 Demographic Committee. This committee includes a panel of individuals who are familiar with key aspects of the growth and development issues impacting the San Antonio region to provide feedback on future demographic growth.

# Comments on TAZ Level Forecasts



- Participants reviewed forecast TAZ level demographics and provided with suggest modifications:
  - Identified TAZs with more population and employment growth potential
  - Identified TAZs where population and employment are less likely to grow in the future years
  - Depicted TAZs where growth would be restricted based on land use (Lakes, Cement Factory etc.)

# Comments on TAZ Level Forecast Year Demographics



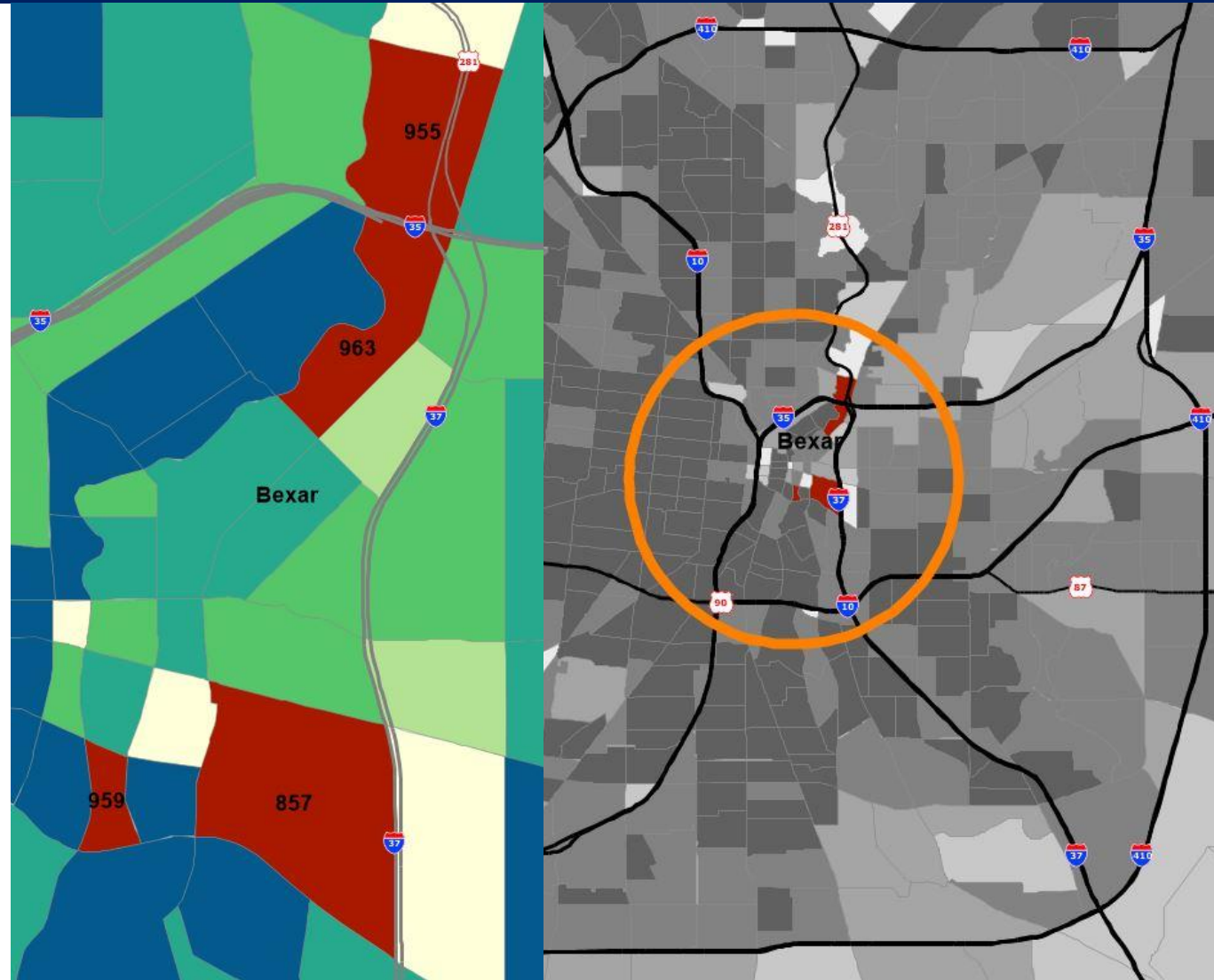
# Feedback Example – Bexar County



- Base Year update
  - TAZ 857, 955, 963
  - ATG identified 959

-Forecast year population increase

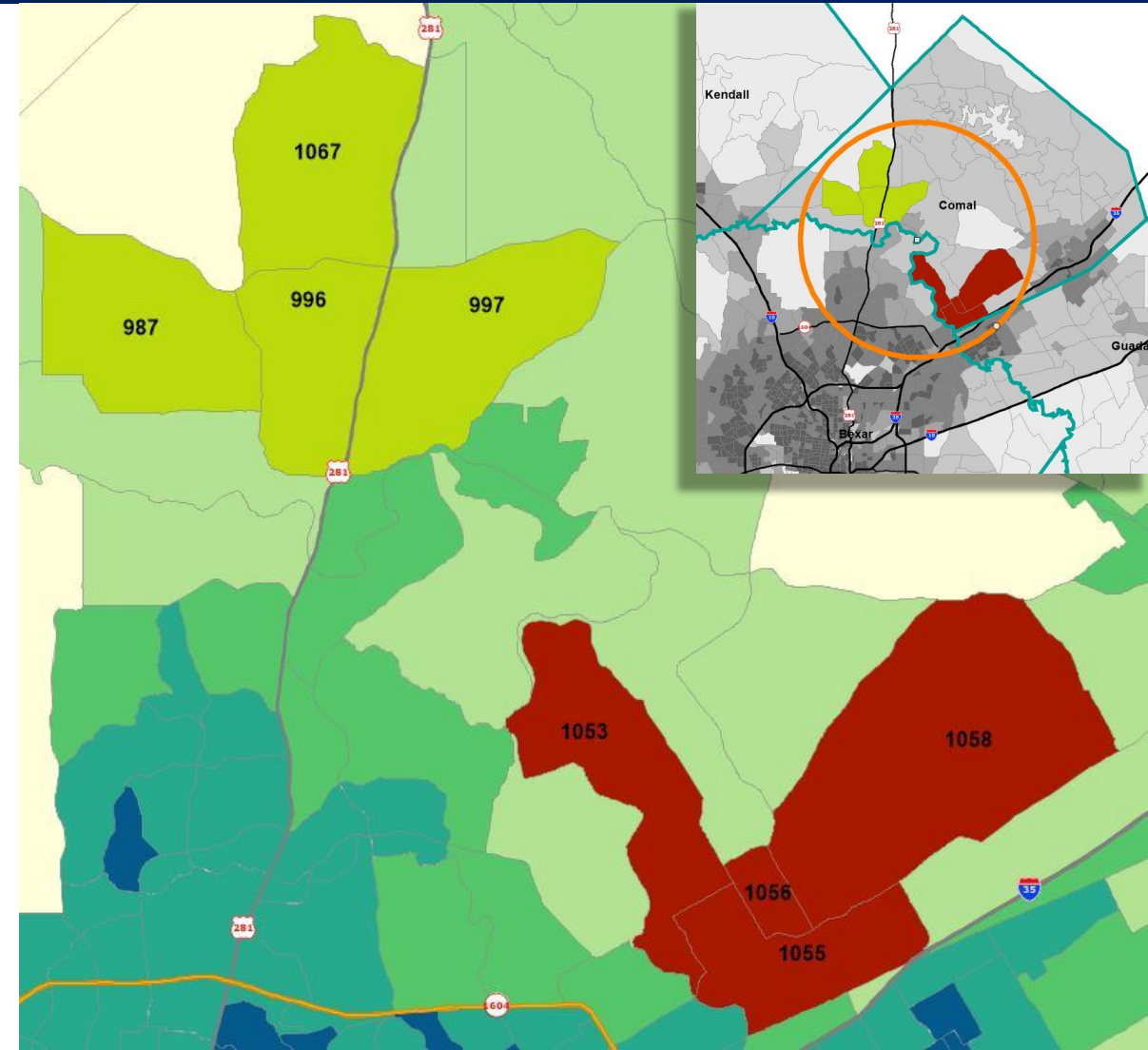
TAZ	Updated Version		Previous Version		2020 Population Change	2050 Population Change
	2020 Population	2050 Population	2020 Population	2050 Population		
857	1,000	1,708	-	-	1,000	1,708
955	1,687	1,943	120	298	1,567	1,645
963	2,420	3,863	90	749	2,330	3,114
959	770	1,141	-	918	770	223



# Feedback Example – Comal County



- Population higher than expectation
  - TAZ 1053, 1055, 1056, 1058
- Population lower than expectation
  - TAZ 987, 996, 997 and 1067



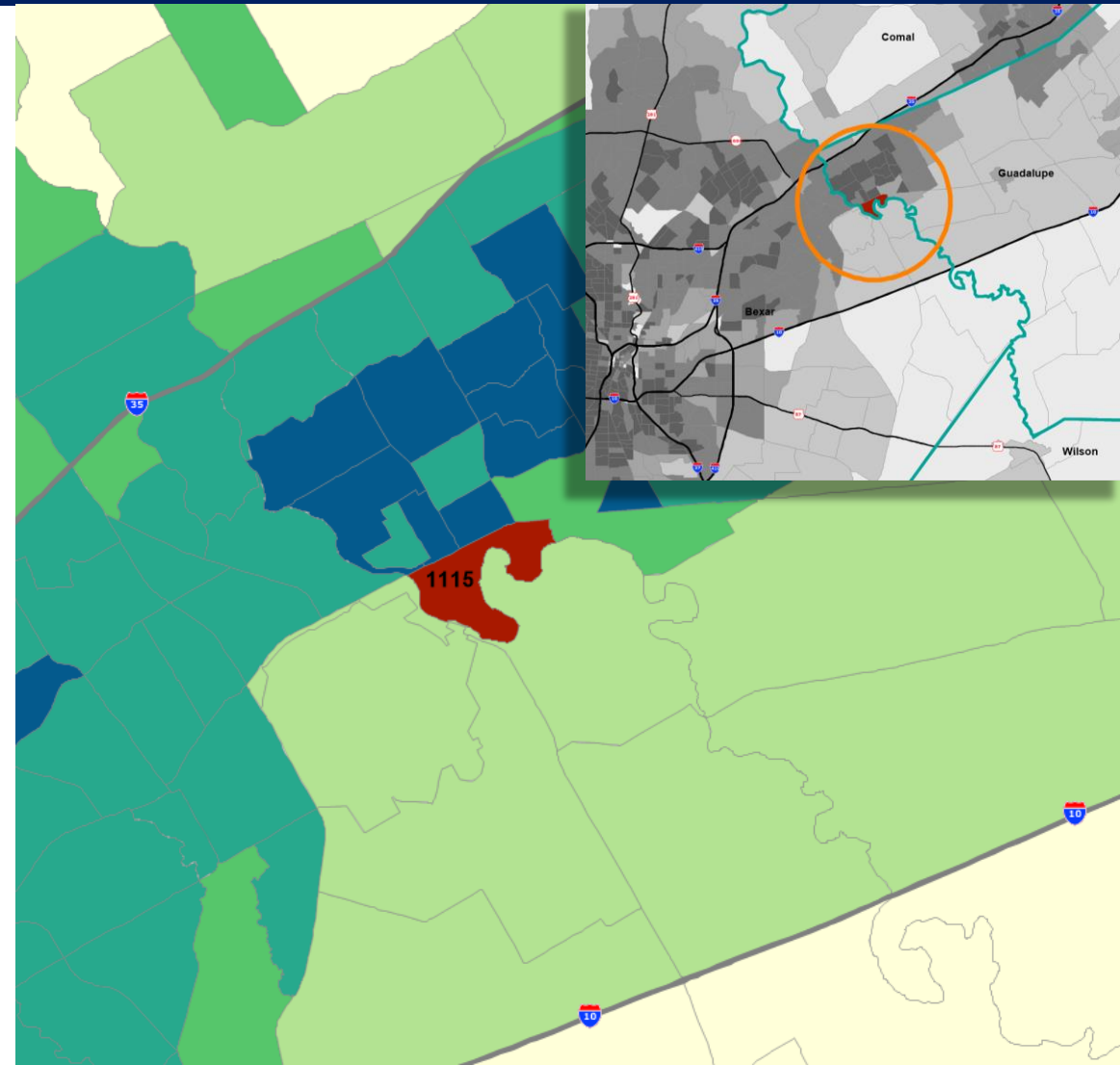
TAZ	Updated Version		Previous Version		2020 Population Change	2050 Population Change
	2020 Population	2050 Population	2020 Population	2050 Population		
987	1,172	6,332	1,172	4,020	-	2,312
996	3,212	7,484	3,212	5,456	-	2,028
997	2,477	7,492	2,477	5,266	-	2,226
1067	3,107	7,312	3,107	5,409	-	1,903
1053	897	1,470	897	7,753	-	(6,283)
1055	1,003	4,121	1,003	7,244	-	(3,123)
1056	1,719	1,719	1,719	2,825	-	(1,106)
1058	1,304	3,267	1,304	8,367	-	(5,100)

# Feedback Example – Guadalupe County



-Large cement plant in TAZ 1115 would restrict future population growth

TAZ	Updated Version		Previous Version		2020 Population Change	2050 Population Change
	2020 Population	2050 Population	2020 Population	2050 Population		
1115	1,516	1,516	1,516	6,750	-	(5,234)

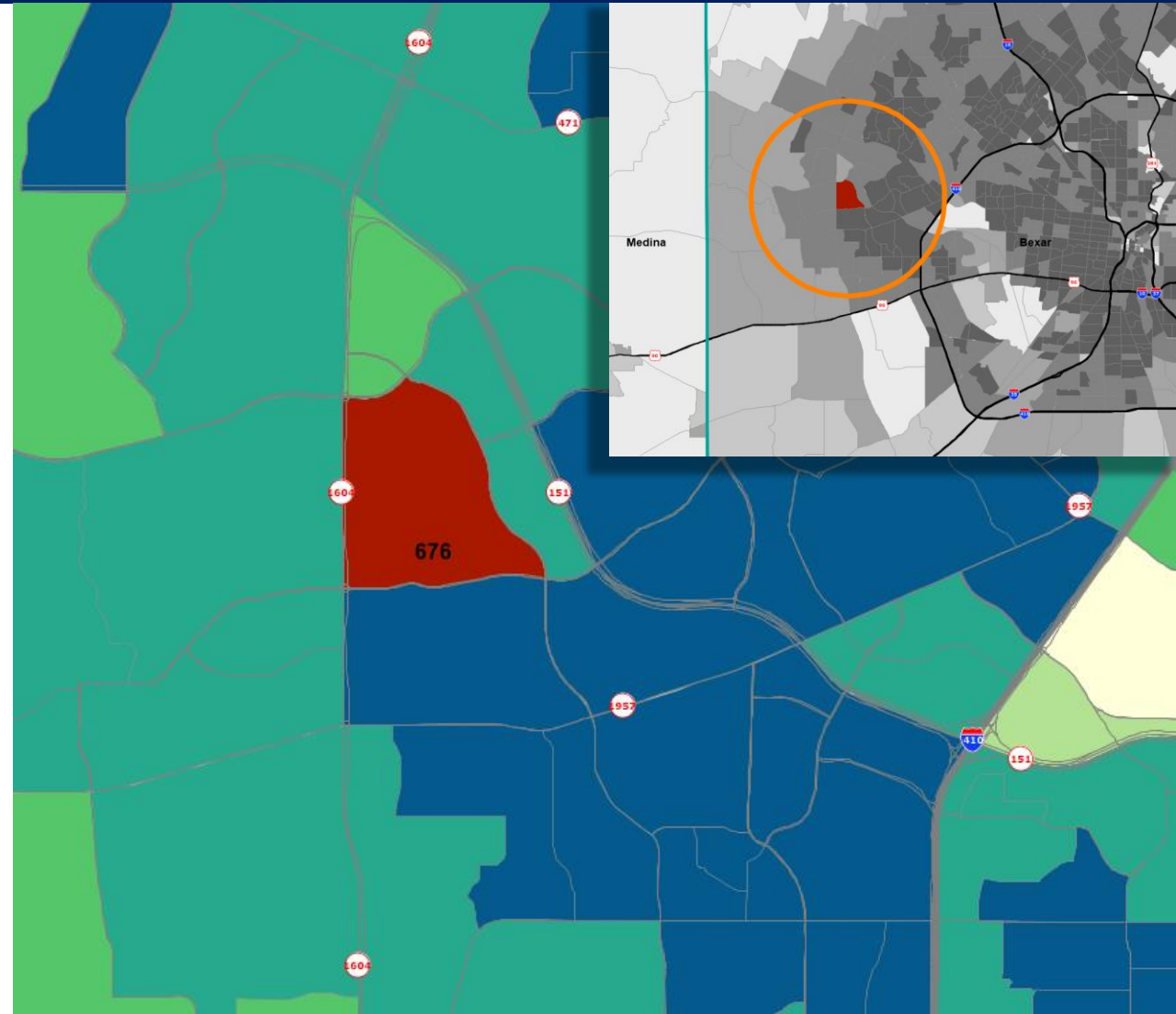


# Feedback Example – Sea World



-Most vacant land is owned by SeaWorld and unlikely to be redeveloped  
- Reduce population growth

TAZ	Updated Version		Previous Version		2020 Population Change	2050 Population Change
	2020 Population	2050 Population	2020 Population	2050 Population		
676	1,857	3,489	1,857	7,122	-	(3,633)

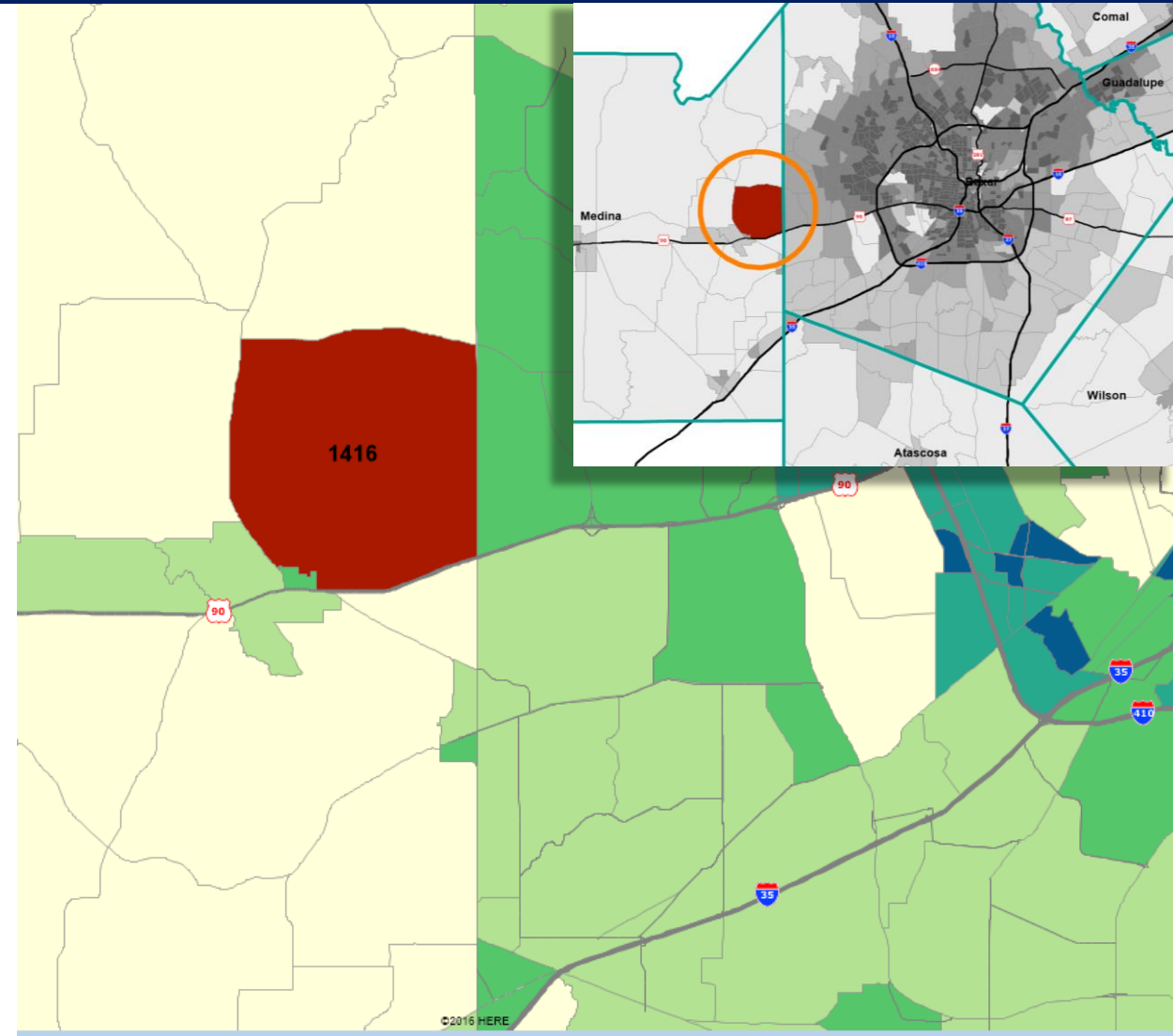


# Feedback Example



-To reflect Medina County and Medina Valley Independent School District (MVISD) forecast, increase forecast year population growth in TAZ 1416

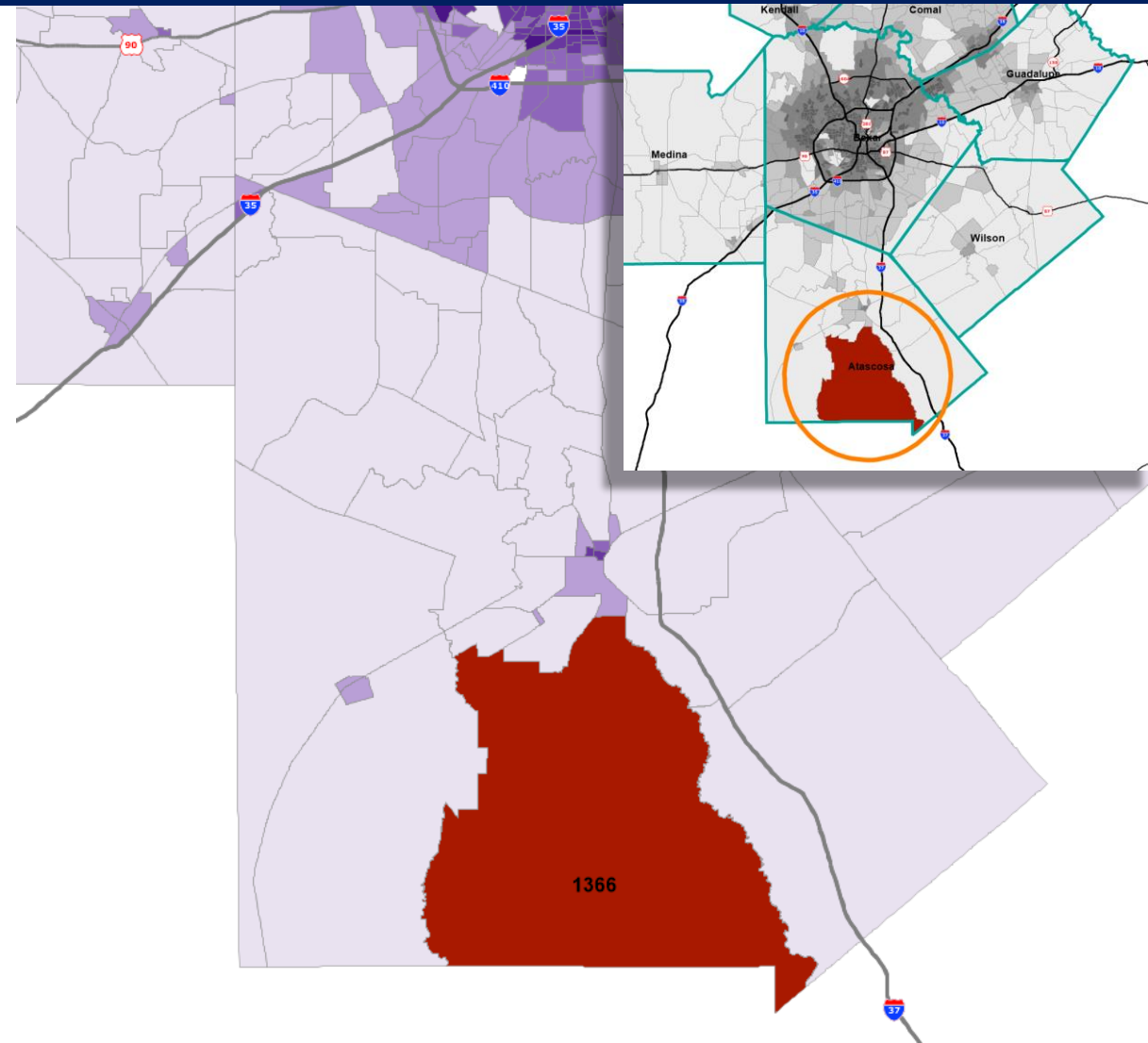
TAZ	Updated Version		Previous Version		2020 Population Change	2050 Population Change
	2020 Population	2050 Population	2020 Population	2050 Population		
1416	699	2,228	699	1,687	-	541



# Feedback Example – Atascosa County



- For the most part, the employment allocation seems reasonable. There may be a bit too much rural employment in the out years.



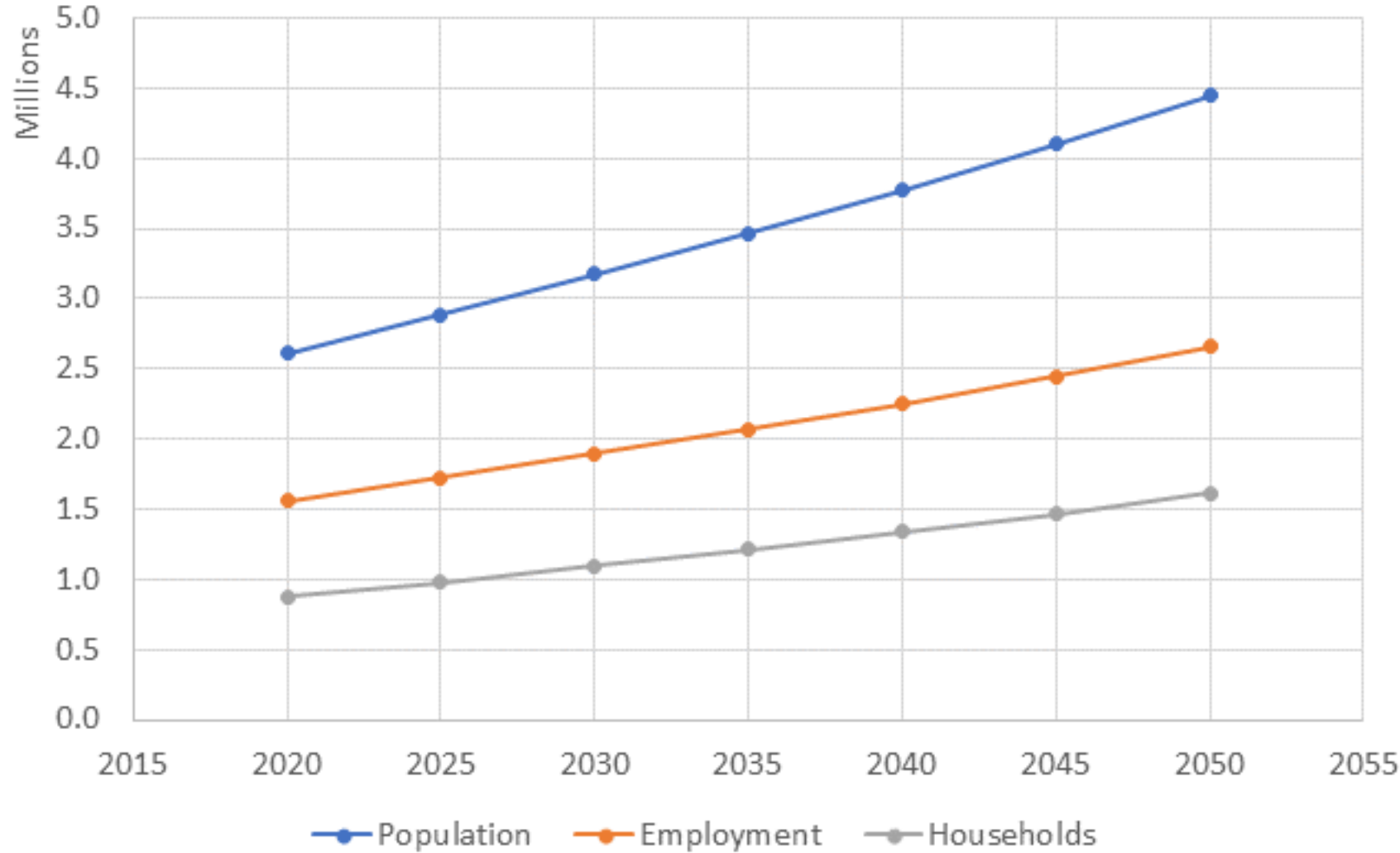
TAZ	Updated Version		Previous Version		2020 Employment Change	2050 Employment Change
	2020 Employment	2050 Employment	2020 Employment	2050 Employment		
1366	1,731	1,855	1,731	1,944	-	(89)



# Final Forecast Demographics



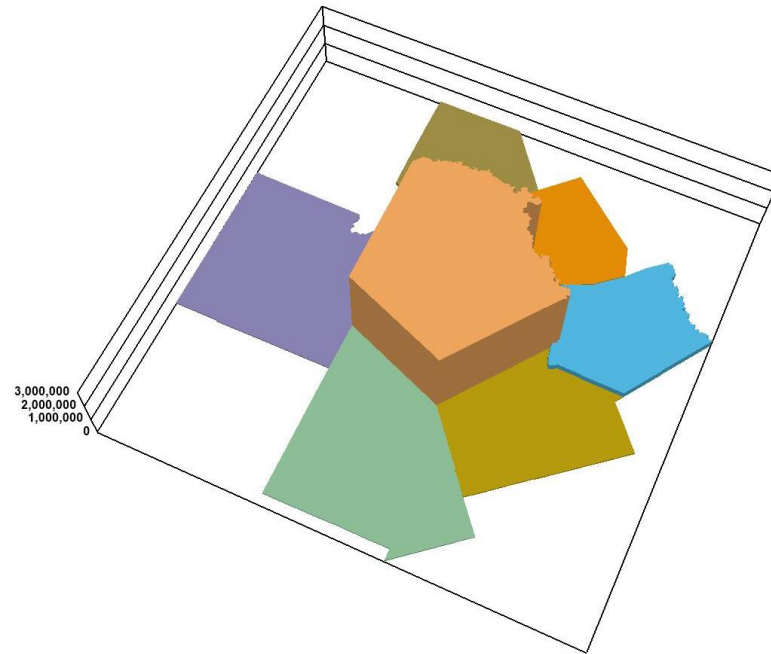
# Regional Population and Employment Trends





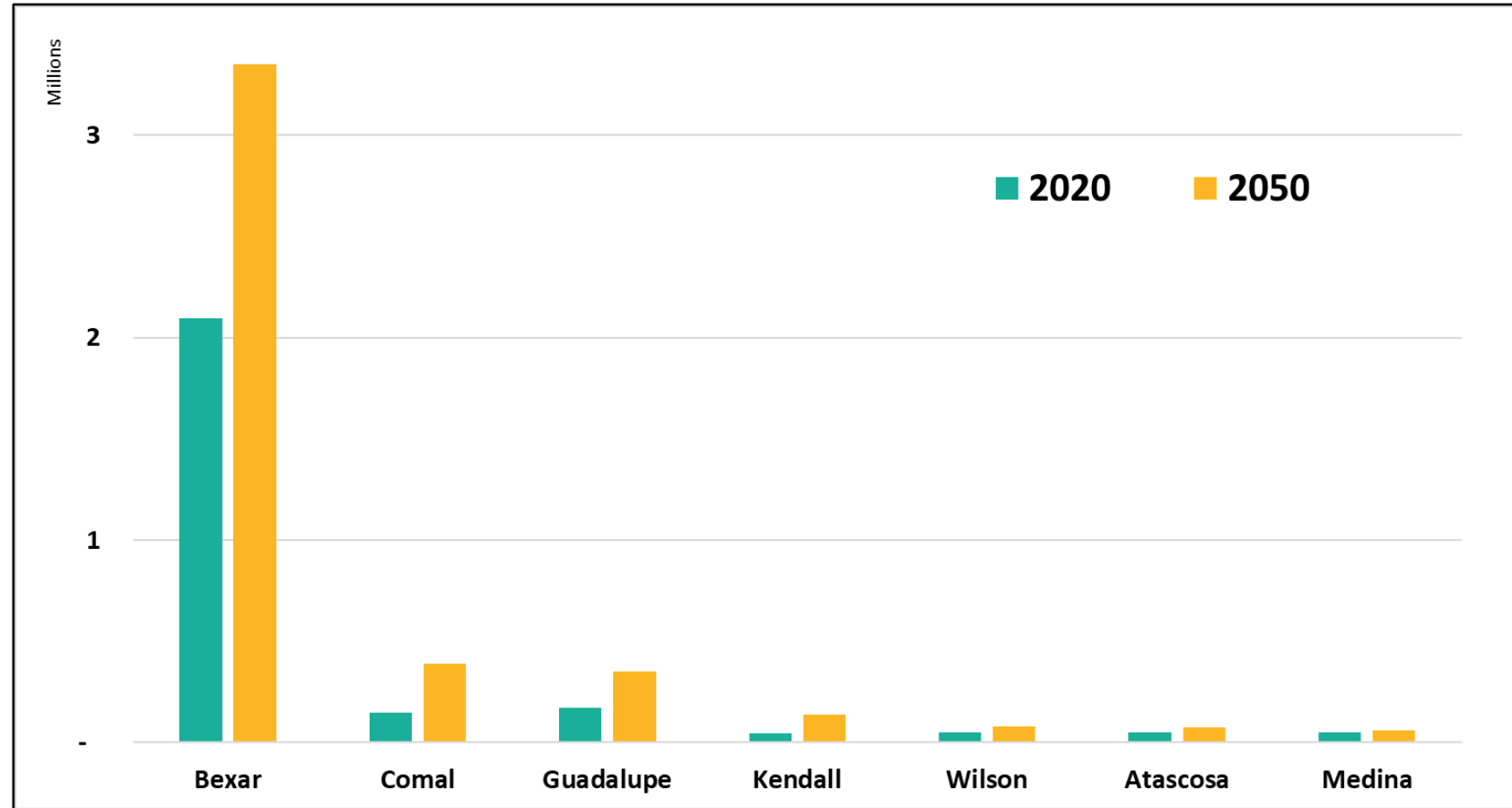
## County Level Population

County	2020 Population	2050 Population	Annual Average Population Growth Rate 2020-2050
Bexar	2,093,502	3,353,060	2.01%
Comal	147,330	389,584	5.48%
Guadalupe	170,266	351,776	3.55%
Kendall	46,278	137,844	6.60%
Wilson	51,802	80,620	1.85%
Atascosa	51,831	73,224	1.38%
Medina	50,594	61,766	0.74%
<b>Total</b>	<b>2,611,603</b>	<b>4,447,874</b>	<b>2.34%</b>



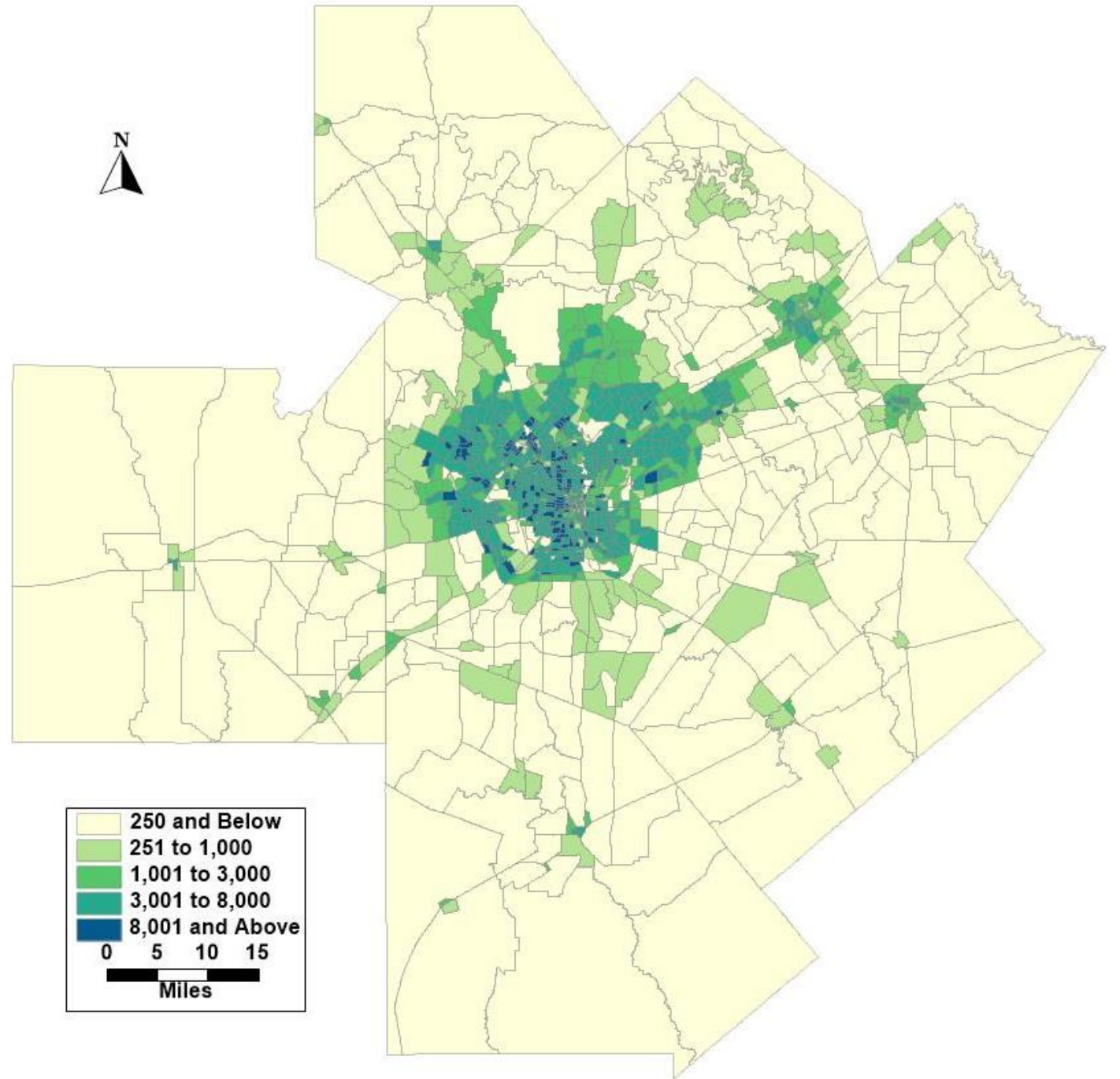


## County Level Population



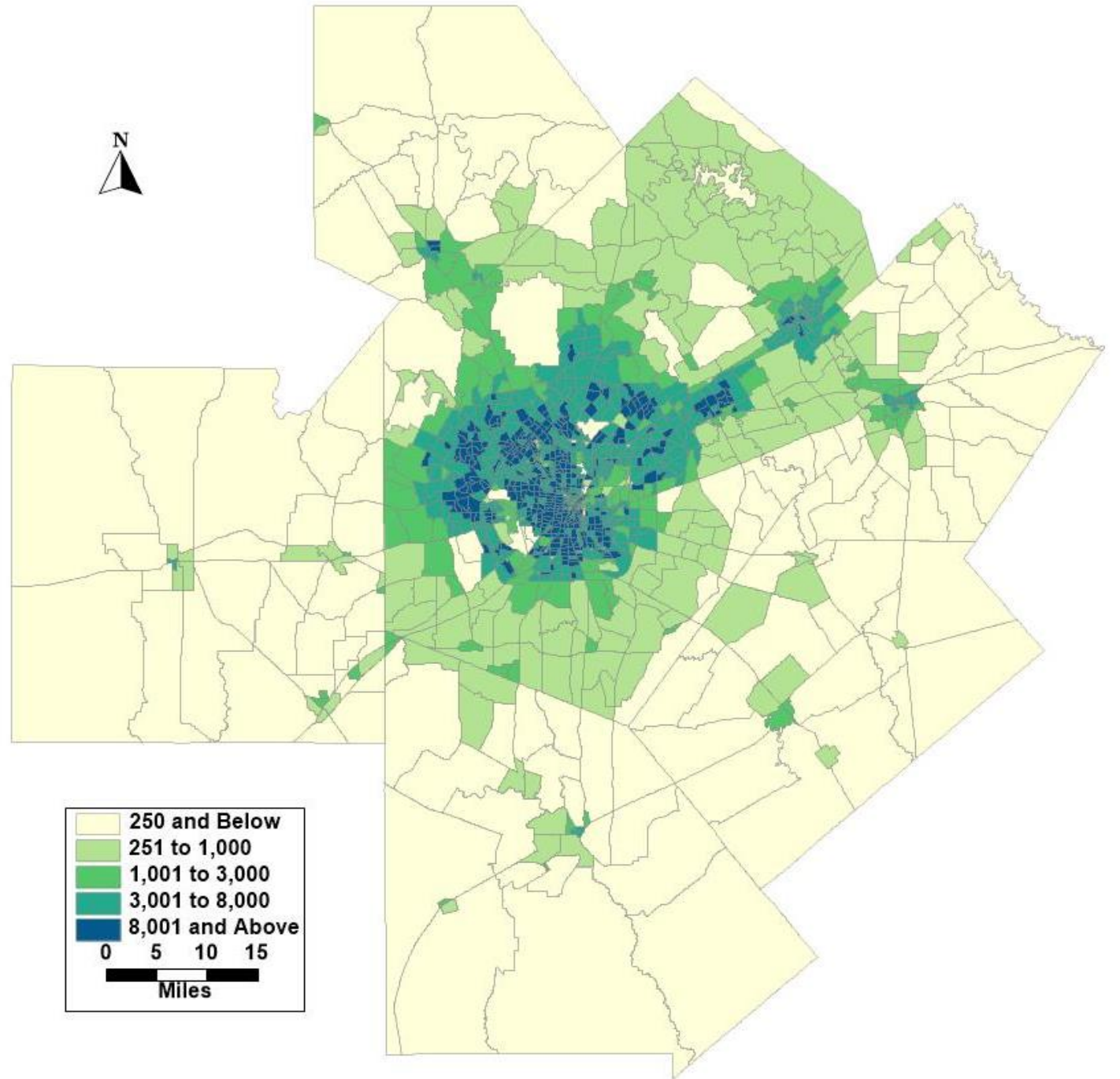


# 2020 Population Per Square Mile (TAZ)

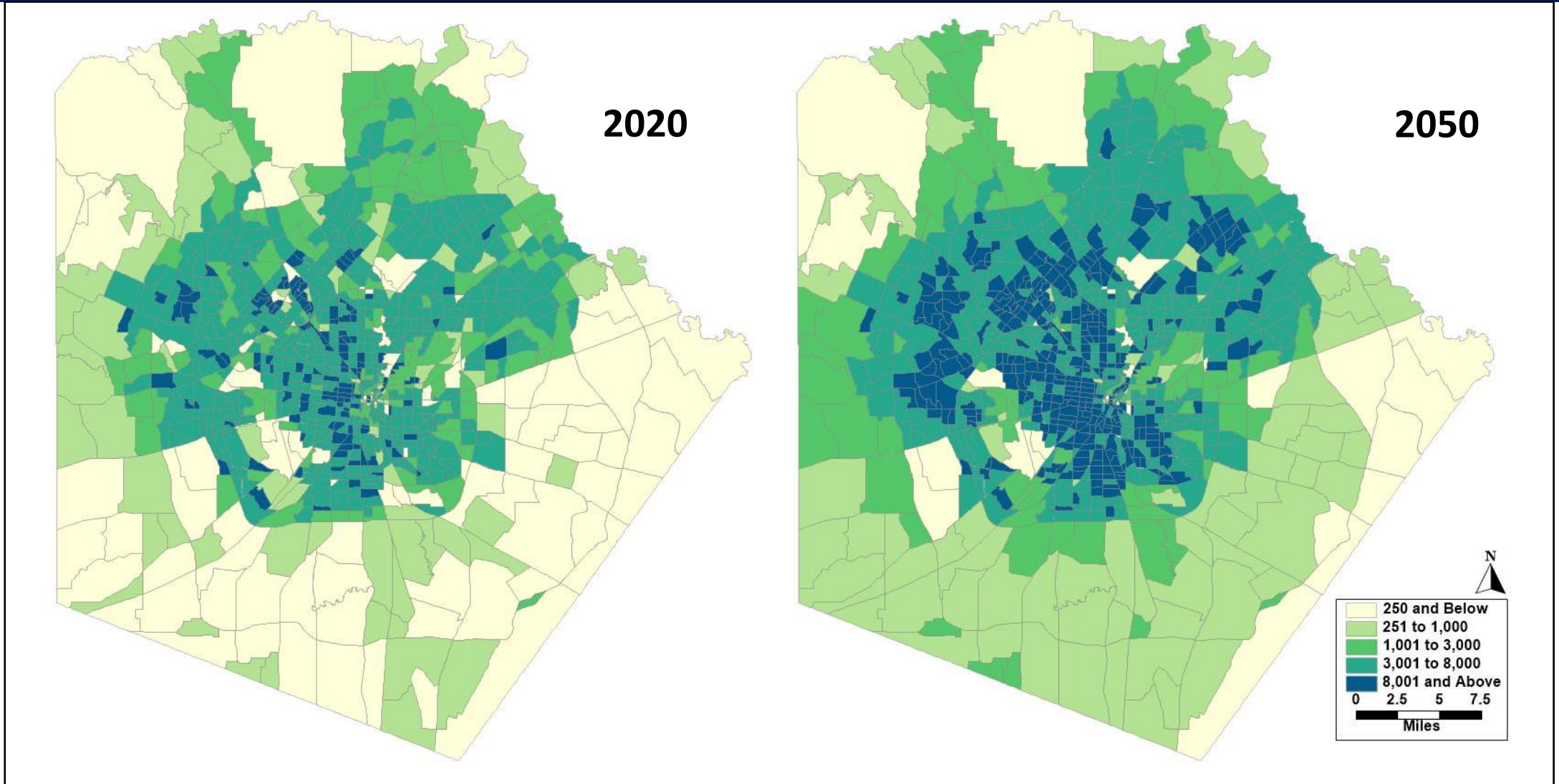




# 2050 Population Per Square Mile (TAZ)



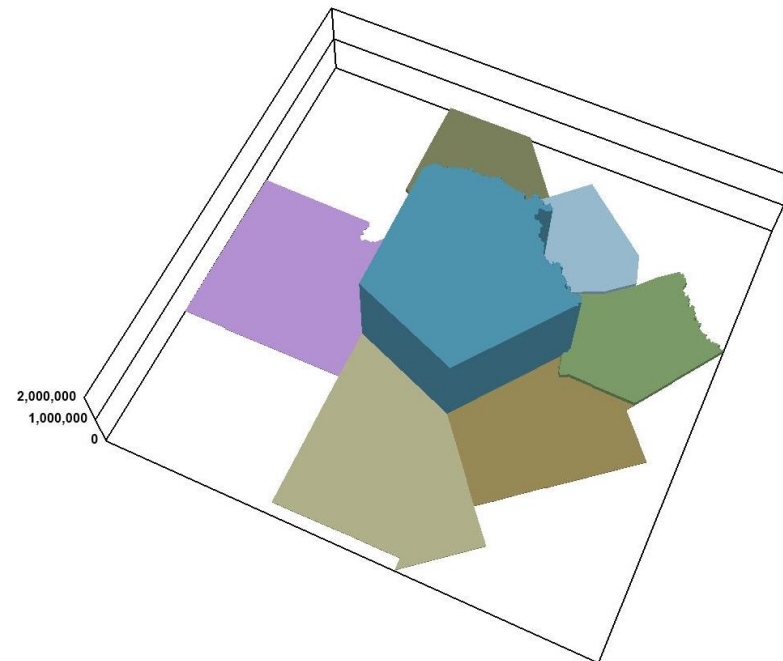
# Population Per Square Mile: Bexar County





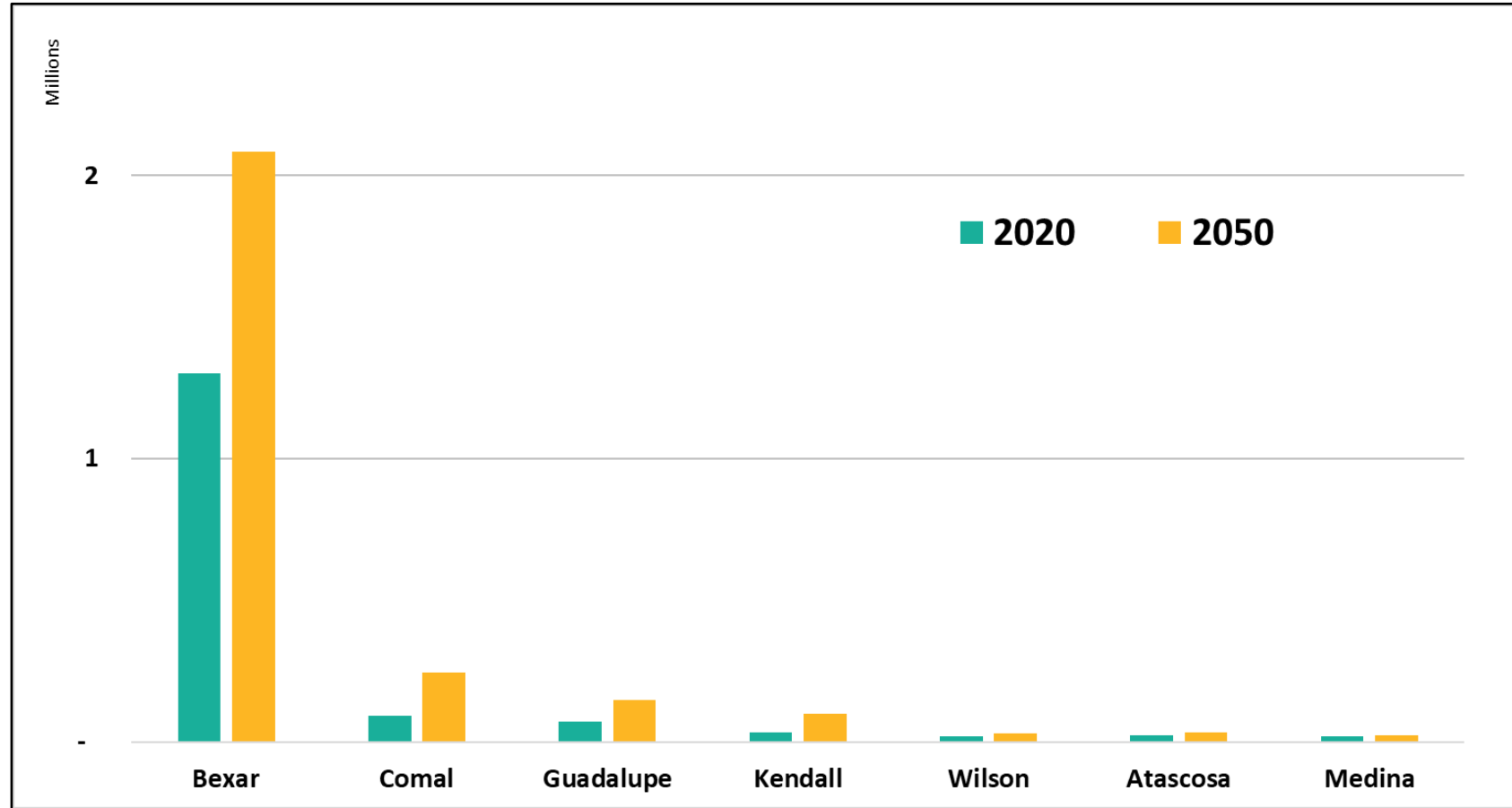
## County Level Employment

County	2020 Employment	2050 Employment	Annual Average Employment Growth Rate 2020-2050
Bexar	1,300,337	2,082,686	2.01%
Comal	92,497	244,589	5.48%
Guadalupe	71,100	146,895	3.55%
Kendall	33,318	99,242	6.60%
Wilson	18,793	29,247	1.85%
Atascosa	22,991	32,480	1.38%
Medina	18,454	22,529	0.74%
<b>Total</b>	<b>1,557,490</b>	<b>2,657,668</b>	<b>2.35%</b>



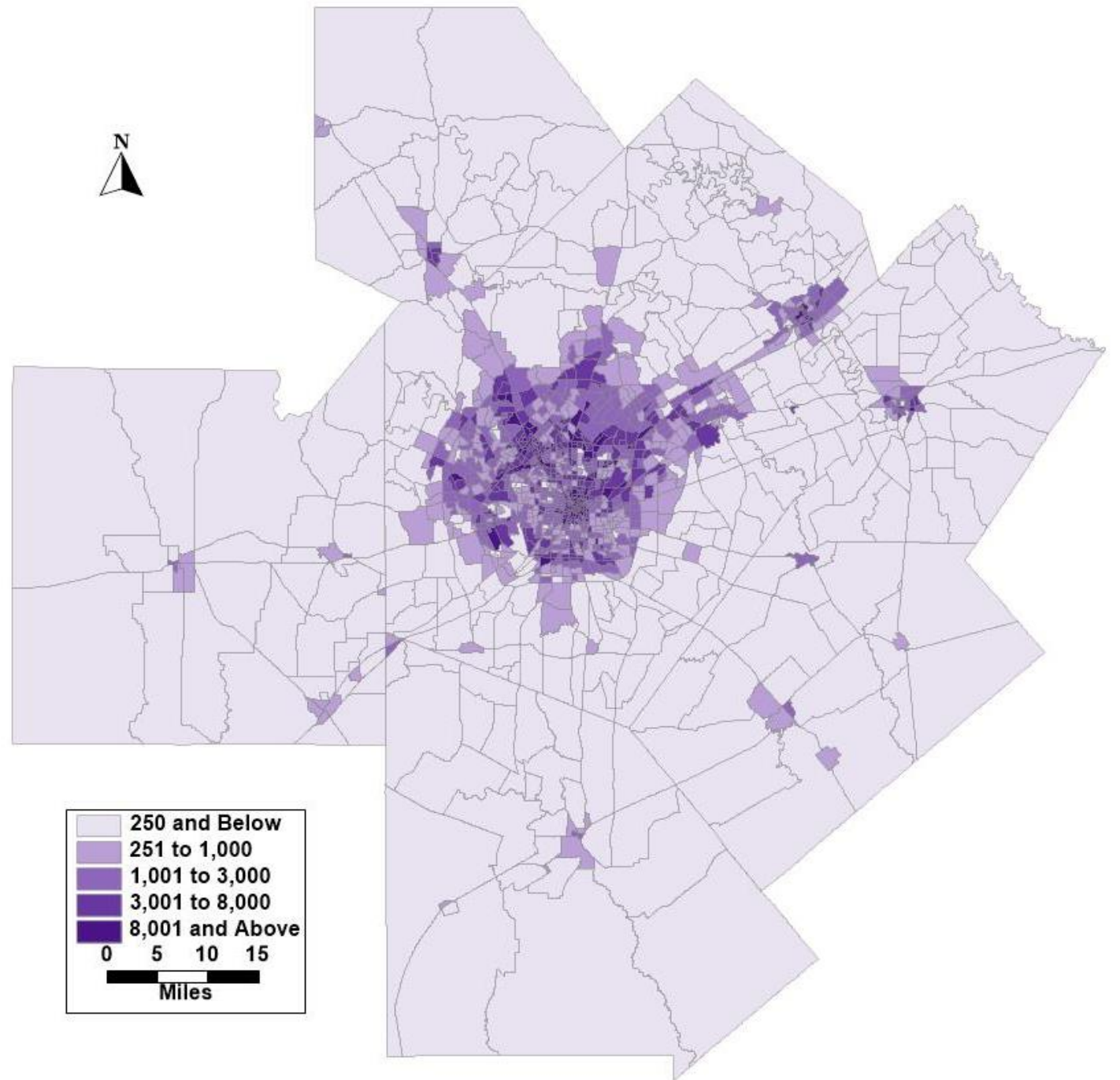


# County Level Employment



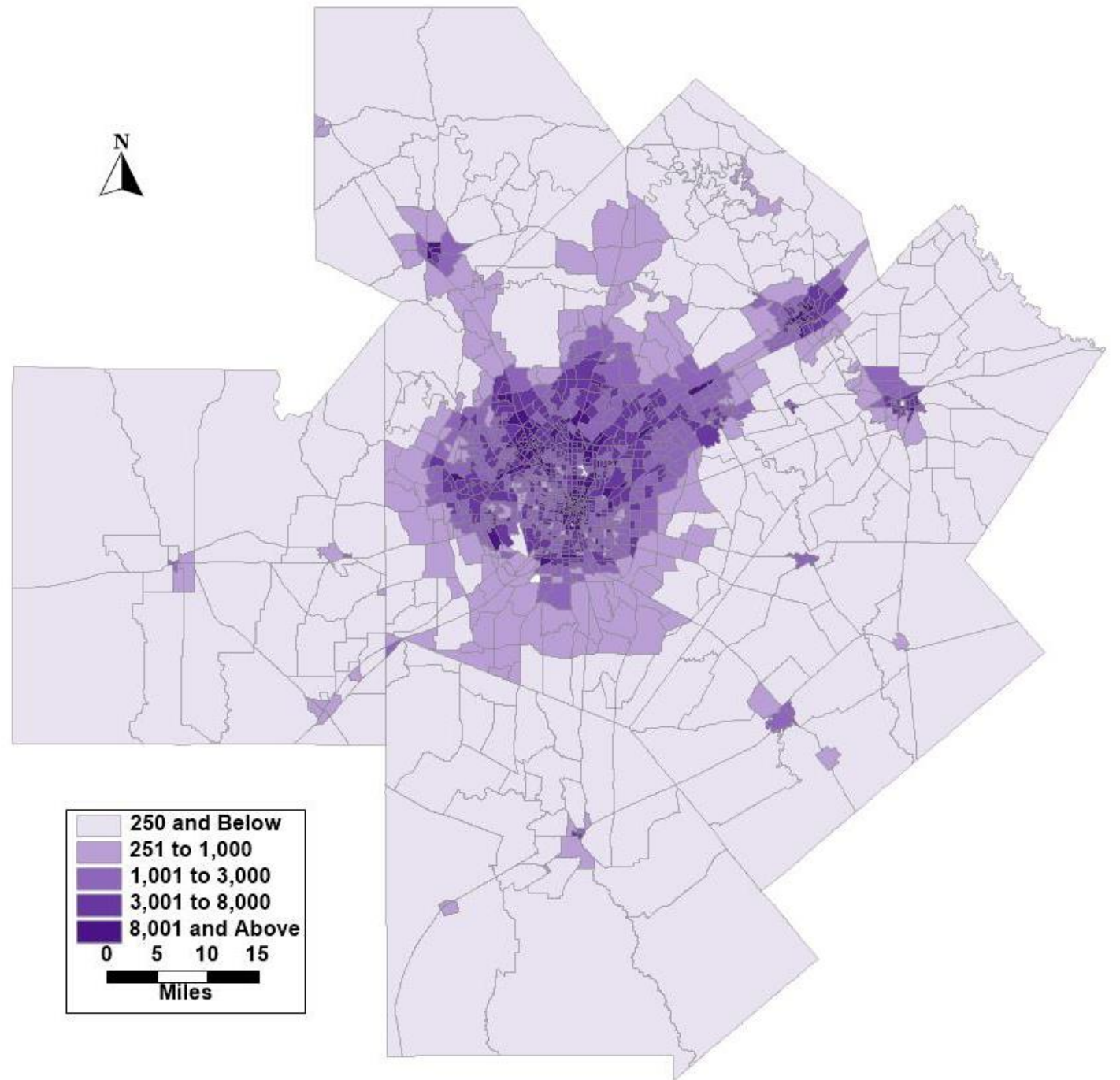


# 2020 Employment Per Square Mile

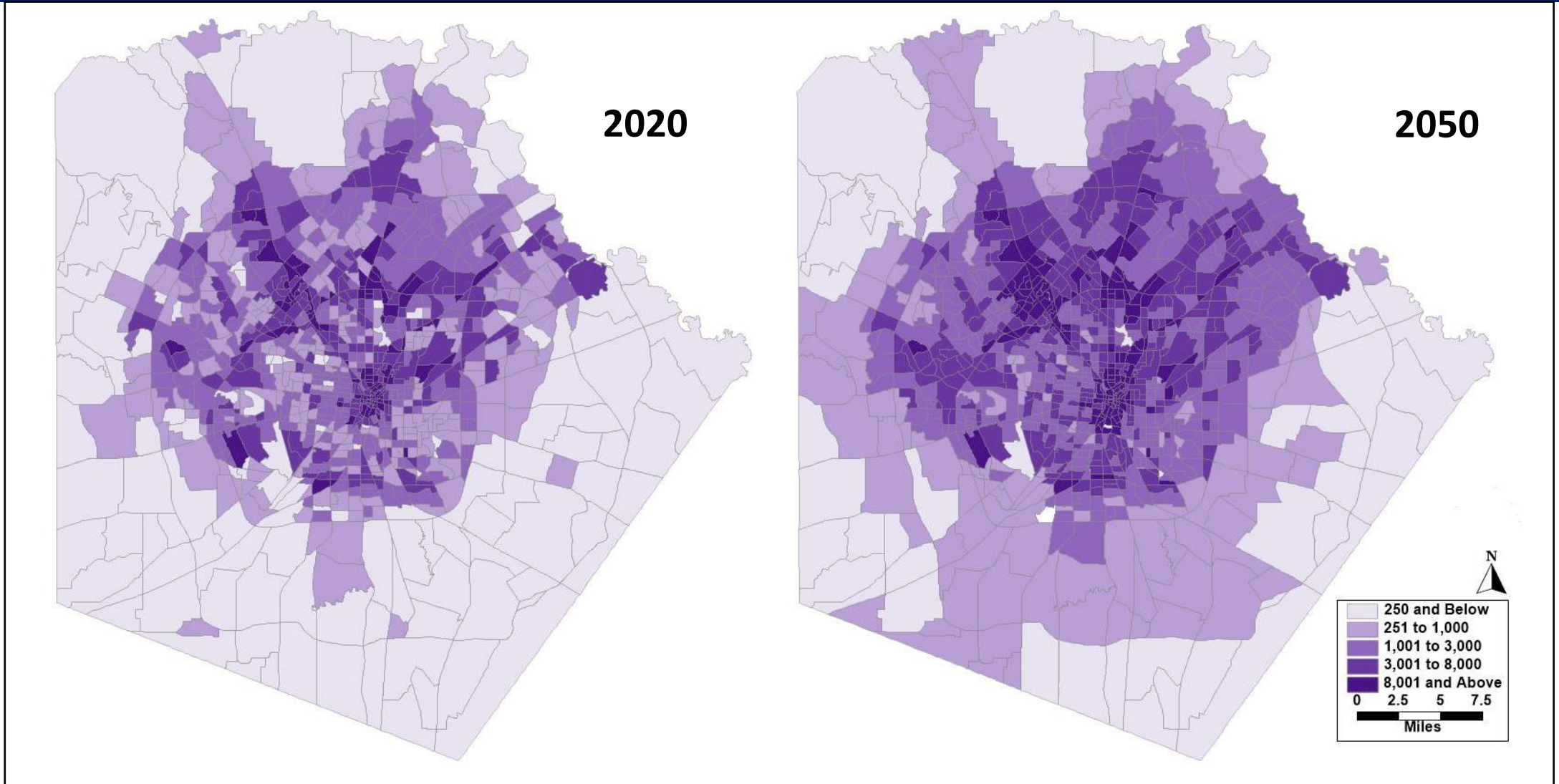




# 2050 Employment Per Square Mile

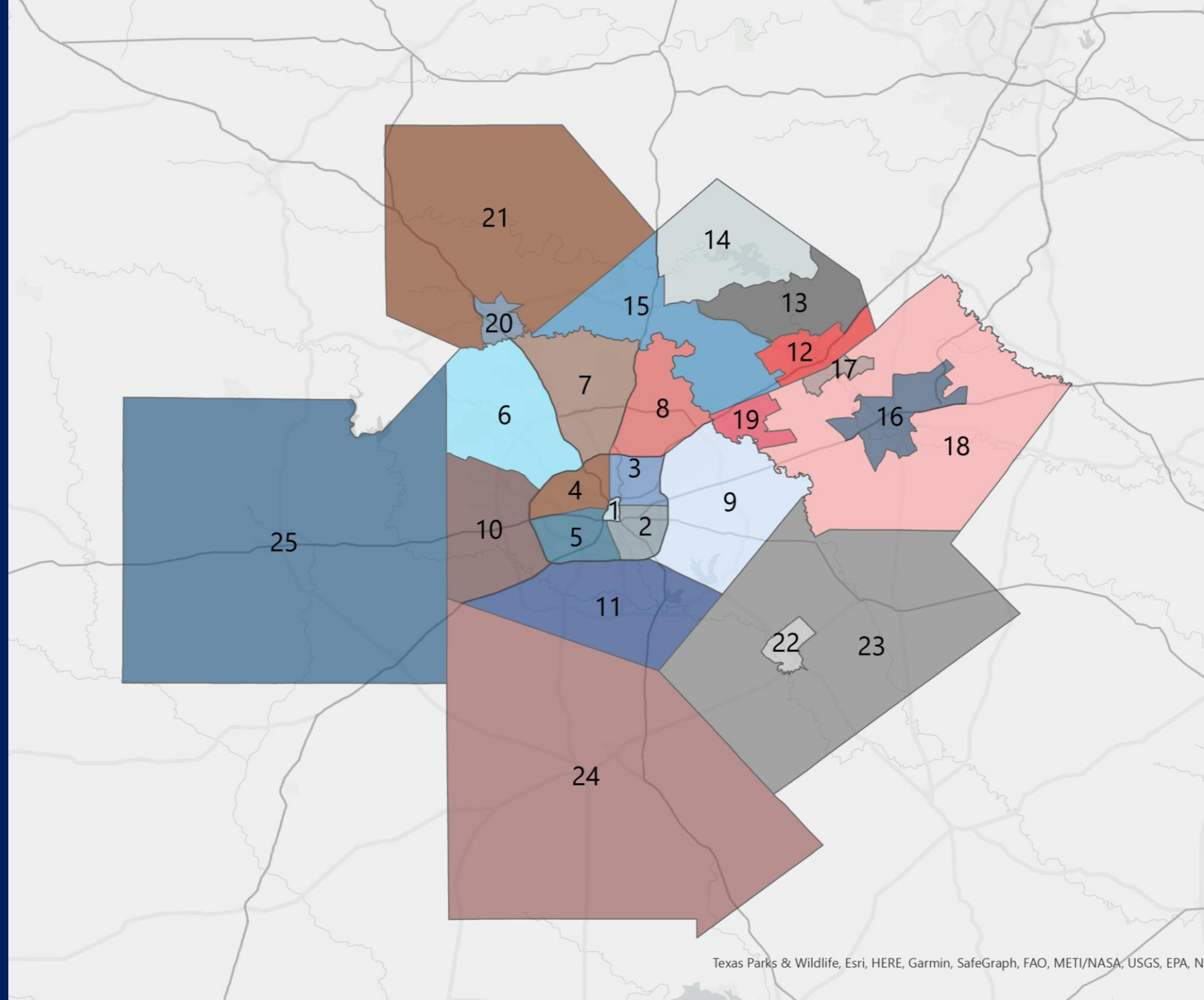


# Employment Per Square Mile: Bexar County



# 13 AAMPO Subareas

- 1-Downtown San Antonio
- 2- SE San Antonio
- 3- NE San Antonio
- 4- NW San Antonio
- 5- SW San Antonio
- 6-Helotes
- 7-Timberwood Park
- 8-Wetmore
- 9-Lone Oak
- 10-Macdonna
- 11-Thelma
- 12-New Braunfels
- 13-Turkey Creek
- 14-Canyon Lake
- 15- Bulverde
- 16- Seguin
- 17-Clear Springs
- 18-Guadalupe
- 19-Schertz
- 20-Boerne
- 21-Kendall
- 22-Floresville
- 23-Wilson
- 24-Atascosa
- 25-Medina



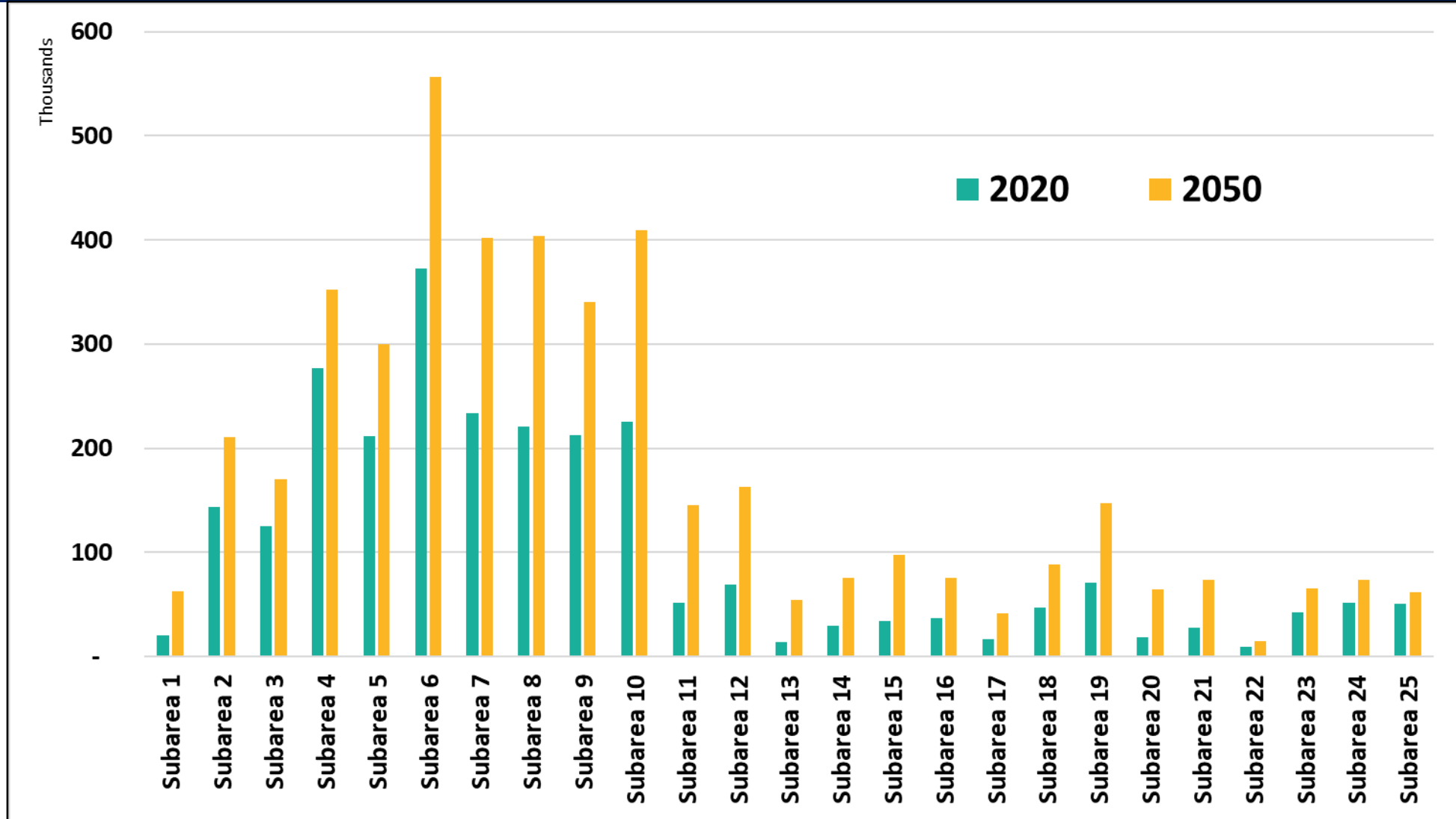


# Subarea Level Population and Employment

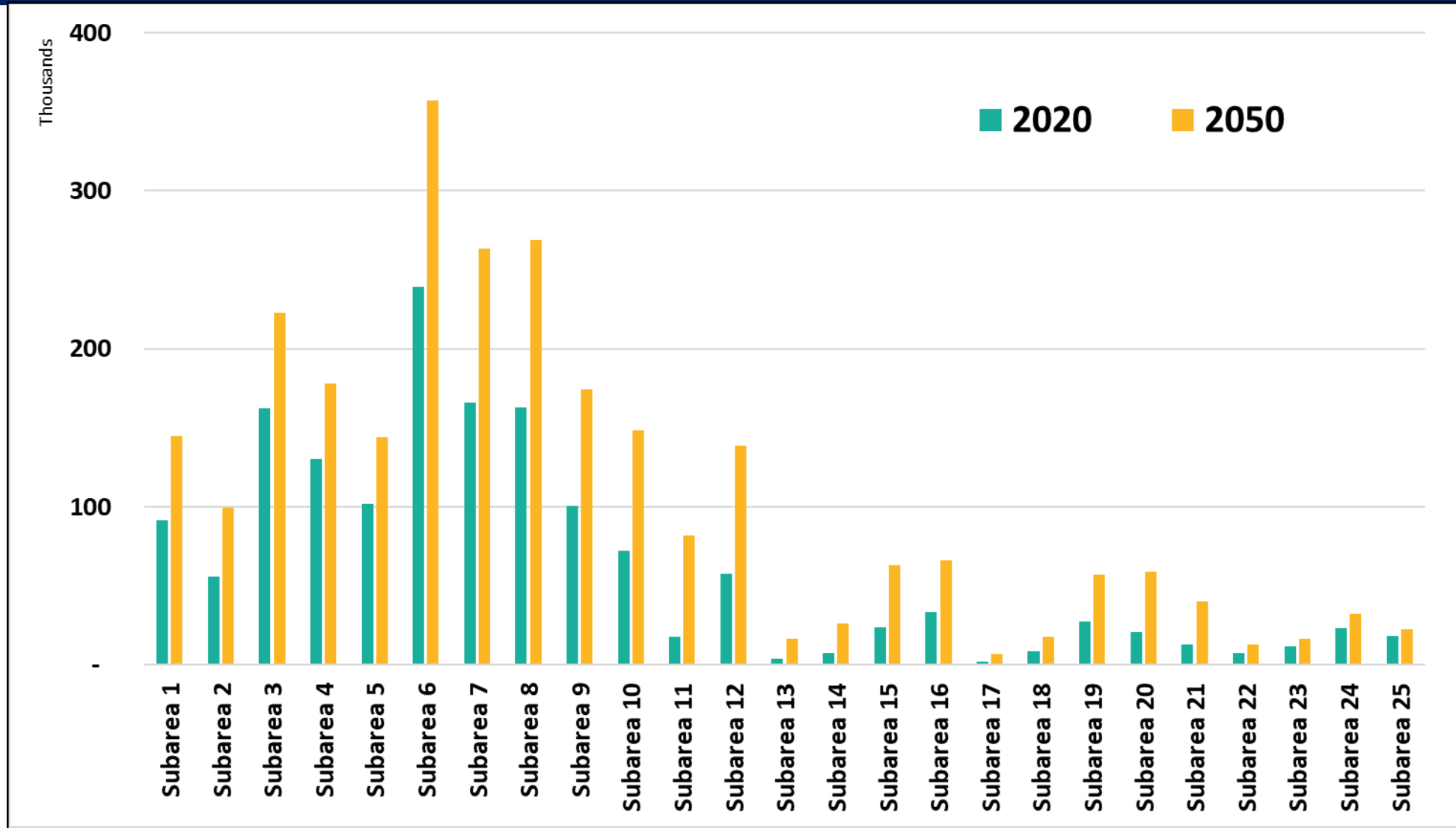
**Annual Average Growth Rate (AAGR)**

County	Subarea	2020 Population	2050 Population	2020 Employment	2050 Employment	AAGR Population 2020-2050	AAGR Employment 2020-2050
Bexar	1	20,267	62,252	91,537	144,969	6.91%	1.95%
Bexar	2	143,769	210,621	55,544	99,138	1.55%	2.62%
Bexar	3	124,933	170,076	162,247	222,836	1.20%	1.24%
Bexar	4	276,766	352,633	130,435	178,098	0.91%	1.22%
Bexar	5	211,241	299,410	101,846	144,242	1.39%	1.39%
Bexar	6	372,165	556,900	239,310	357,250	1.65%	1.64%
Bexar	7	233,715	401,656	165,977	263,098	2.40%	1.95%
Bexar	8	220,608	404,129	162,959	268,500	2.77%	2.16%
Bexar	9	212,695	339,944	100,831	174,369	1.99%	2.43%
Bexar	10	225,724	409,680	71,912	148,533	2.72%	3.55%
Bexar	11	51,619	145,759	17,739	81,653	6.08%	12.01%
Comal	12	69,035	162,402	57,796	138,412	4.51%	4.65%
Comal	13	13,934	53,977	3,636	16,725	9.58%	12.00%
Comal	14	29,871	75,552	7,582	26,427	5.10%	8.28%
Comal	15	34,490	97,653	23,483	63,025	6.10%	5.61%
Guadalupe	16	36,466	75,226	33,114	66,021	3.54%	3.31%
Guadalupe	17	16,382	41,548	1,938	6,507	5.12%	7.86%
Guadalupe	18	46,536	87,915	8,548	17,413	2.96%	3.46%
Guadalupe	19	70,882	147,087	27,500	56,954	3.58%	3.57%
Kendall	20	18,465	64,023	20,711	58,878	8.22%	6.14%
Kendall	21	27,813	73,821	12,607	40,364	5.51%	7.34%
Wilson	22	9,119	15,166	7,188	12,568	2.21%	2.49%
Wilson	23	42,683	65,454	11,605	16,679	1.78%	1.46%
Atascosa	24	51,831	73,224	22,991	32,480	1.38%	1.38%
Medina	25	50,594	61,766	18,454	22,529	0.74%	0.74%

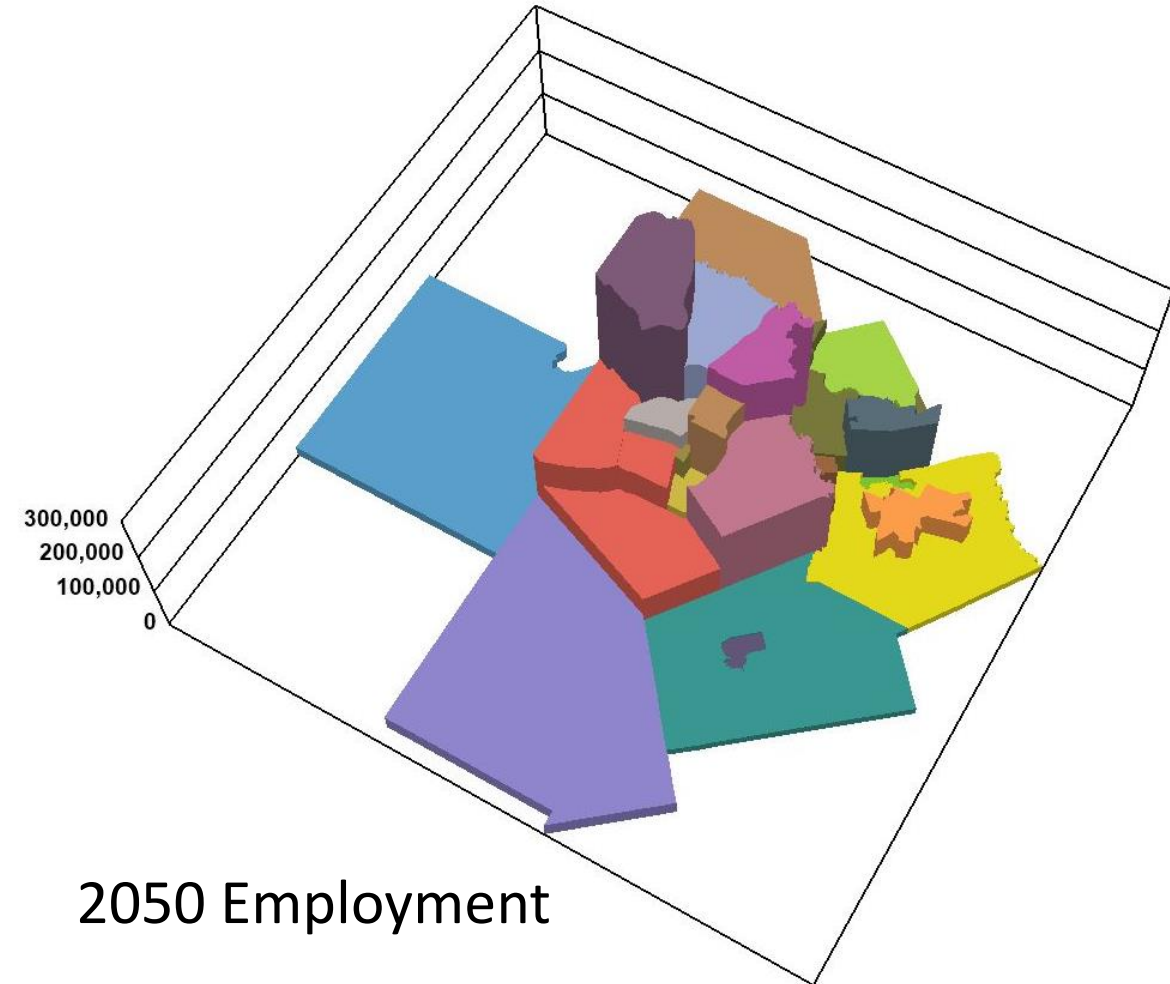
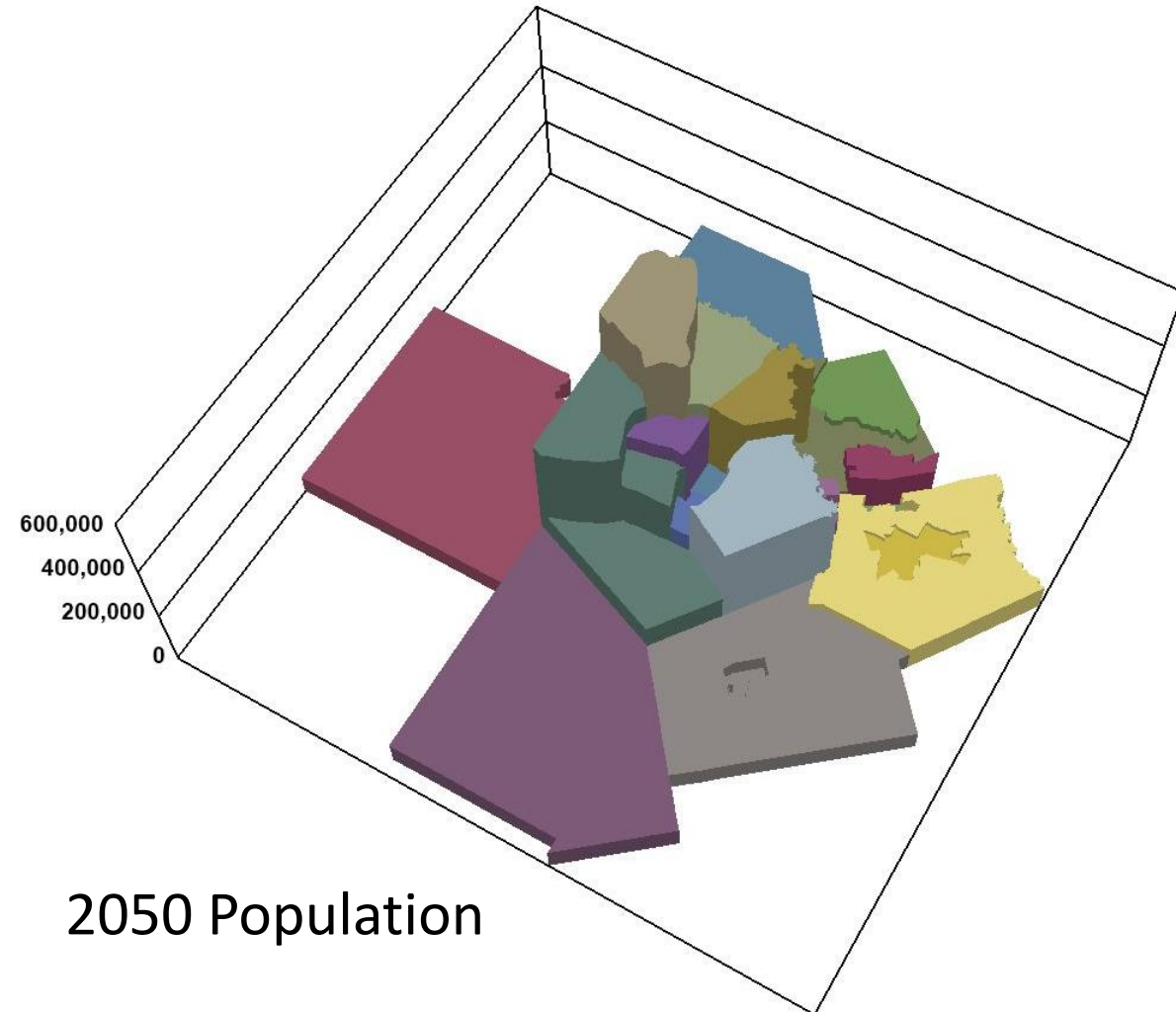
# Subarea Population



# Subarea Employment



# Subarea Population & Employment



# Website Walkthrough



<https://aampo-mobility-2050-atginc.hub.arcgis.com/pages/demographic-results>



AAMPO Mobility 2050

Opportunities and Constraints

Demographic Evaluation

Demographic Results

## AAMPO Mobility 2050

You're invited to join the San Antonio Region Demographic Committee!

Welcome to the website for the San Antonio Region Demographic Committee! The Alamo Area Metropolitan Planning Organization (AAMPO) is updating the Travel Demand Model. The Model is a major tool used in directing future transportation investments as the San Antonio Region grows - determining where limited funding for transportation projects should be targeted. A key part of the process of updating the model is to develop accurate short- and long-range population and employment forecasts for the San Antonio Region. To ensure that we get the most accurate forecast possible, we are asking local leaders with knowledge and expertise in certain fields to participate in helping us develop these important demographic forecasts. You have been selected by the AAMPO to participate in the 2050 Demographic Committee. This committee includes a panel of individuals who are familiar with key aspects of the growth and development issues impacting the San Antonio region to provide feedback on future demographic growth.



# *Thank You for Your Participation*

Contact:

Mike Chaney

512-695-0429

[MChaney@EmailATG.com](mailto:MChaney@EmailATG.com)

