



2024/25 UTP Update & 2026 Look Ahead

Scott Nelson, P.E., PTOE | TxDOT San Antonio District

October 28, 2024



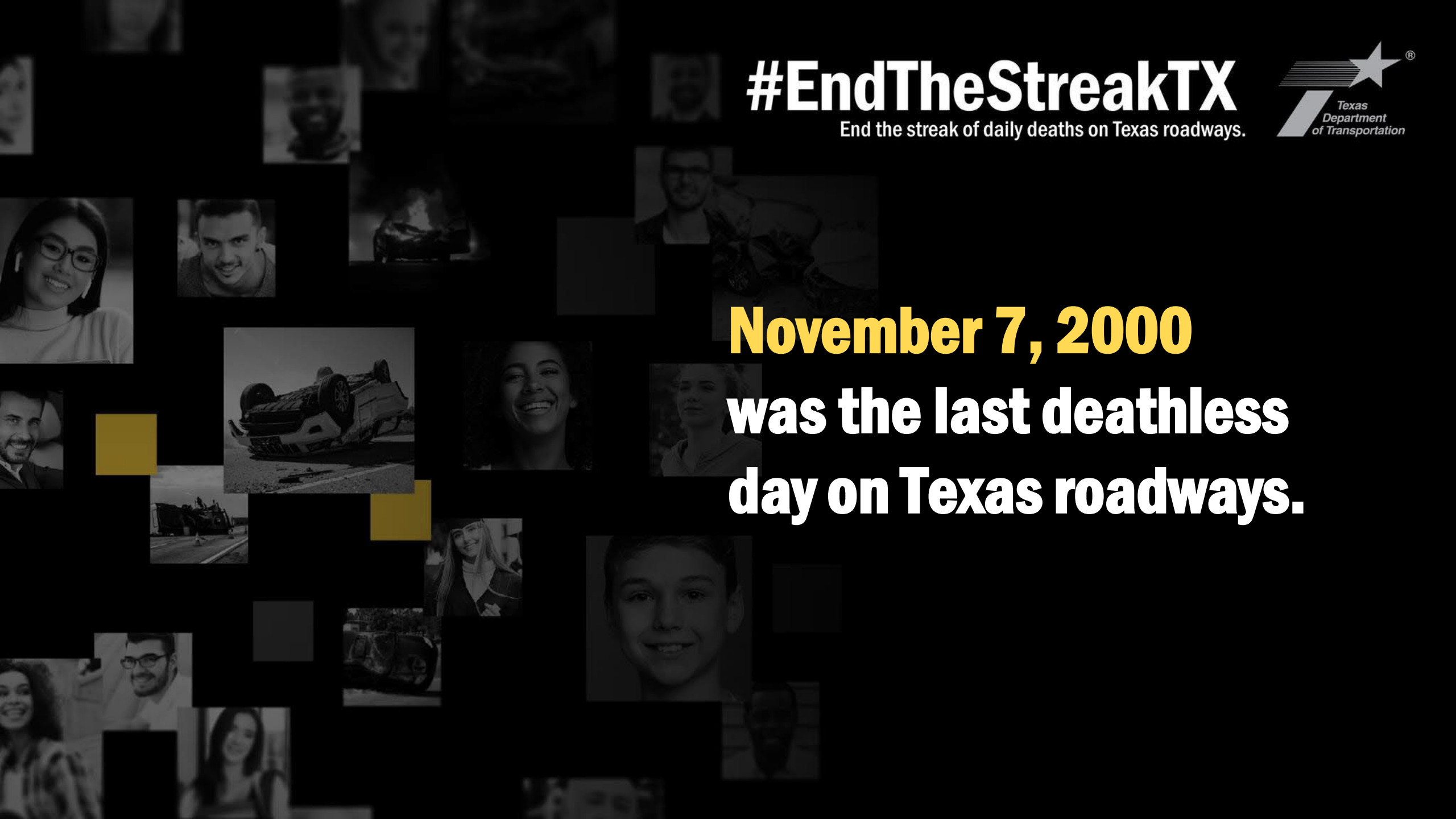
#EndTheStreakTX

End the streak of daily deaths on Texas roadways.



November 7, 2000

**was the last deathless
day on Texas roadways.**





DEADLY driving behaviors

Driving at unsafe speeds

Driving at unsafe speeds is an aggressive behavior that can lead to collisions. Don't risk your life or someone else's just to shave a few minutes off your commute.



1

Impaired driving

Alcohol and drugs slow down your reaction time, mess with your coordination and affect your judgement – all of which are needed to drive safely. Don't drive if you are impaired. Plan a sober ride home.



2

Distracted driving

When you're not focused on the road, your risk of a crash increases. Don't talk, text, or use apps while driving.



3



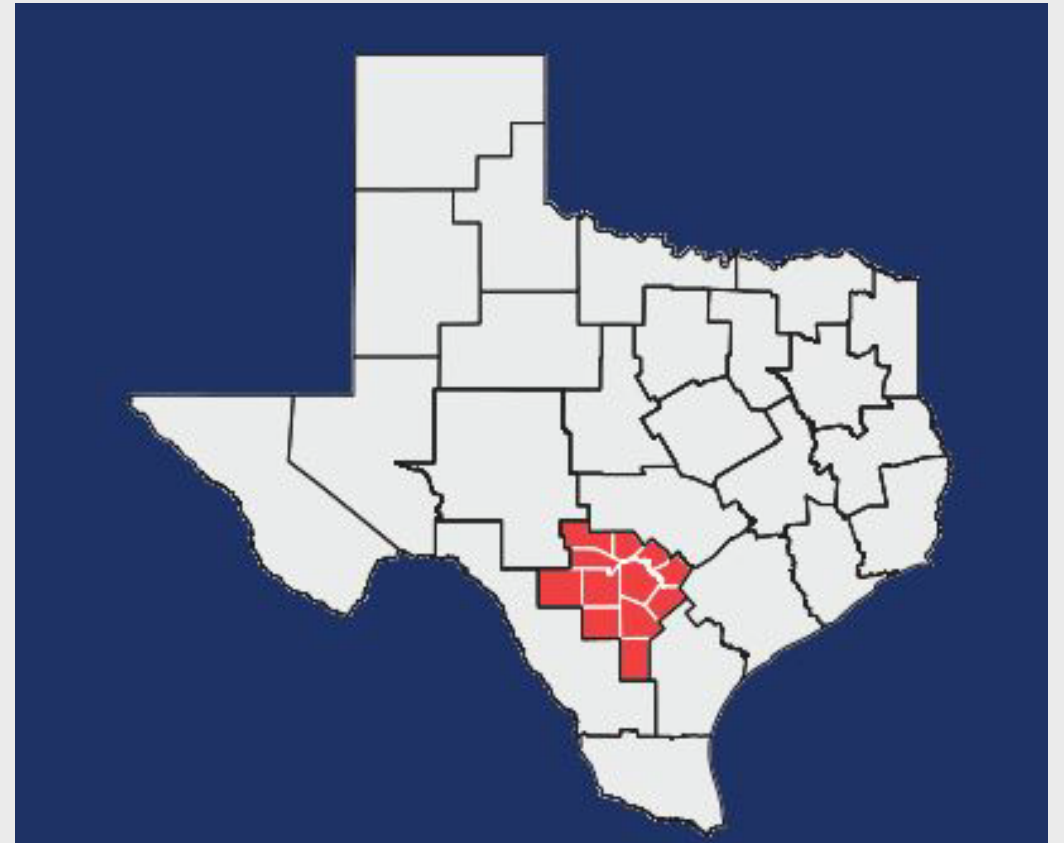
#EndTheStreakTX

End the streak of daily deaths on Texas roadways.

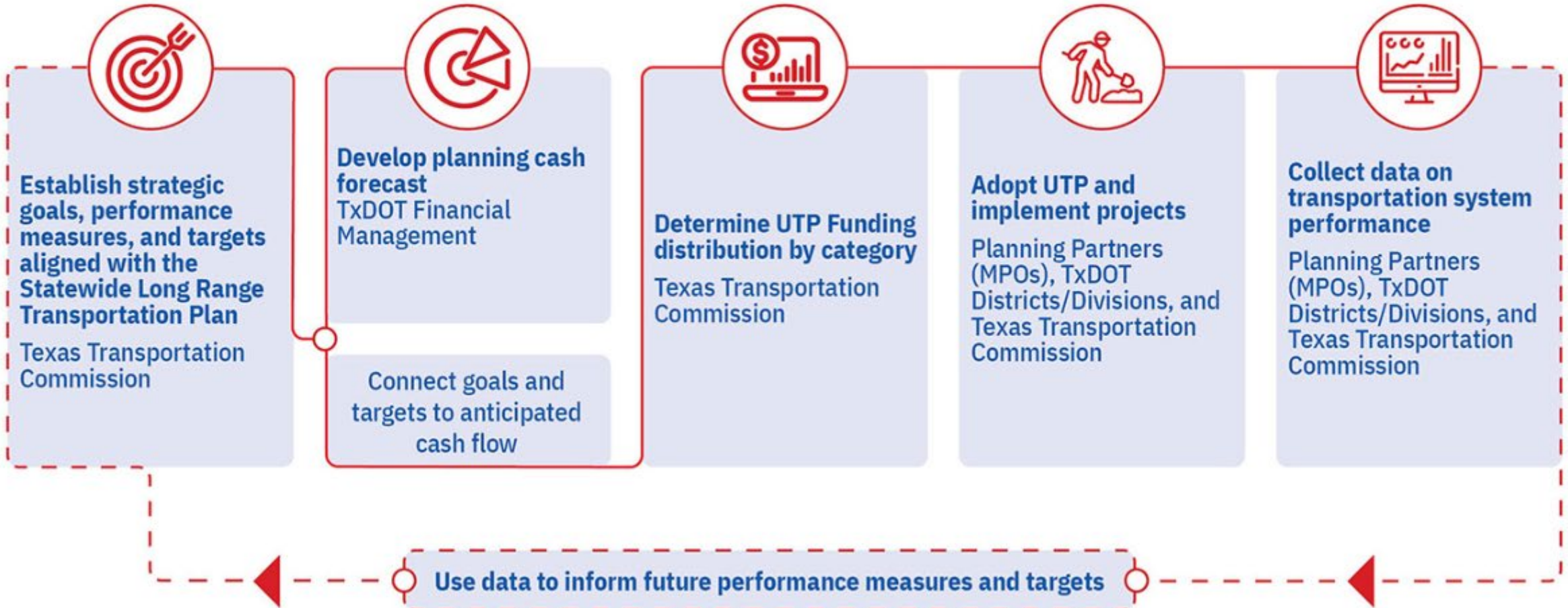


Unified Transportation Program (UTP)

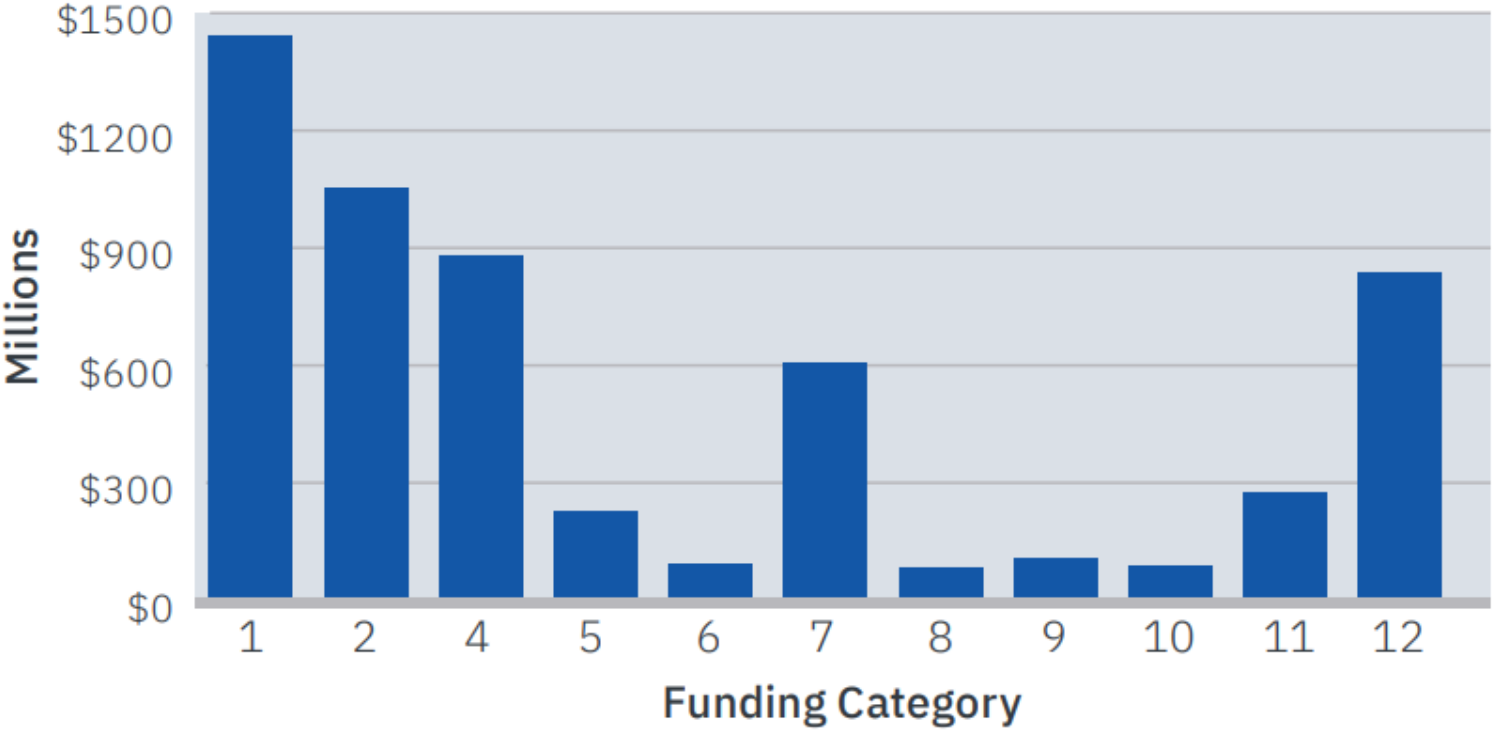
The annual long-range planning process document that guides the development of specific transportation projects and programming linked to the goals, performance measures and targets of the long-range plans.



UTP DEVELOPMENT PROCESS



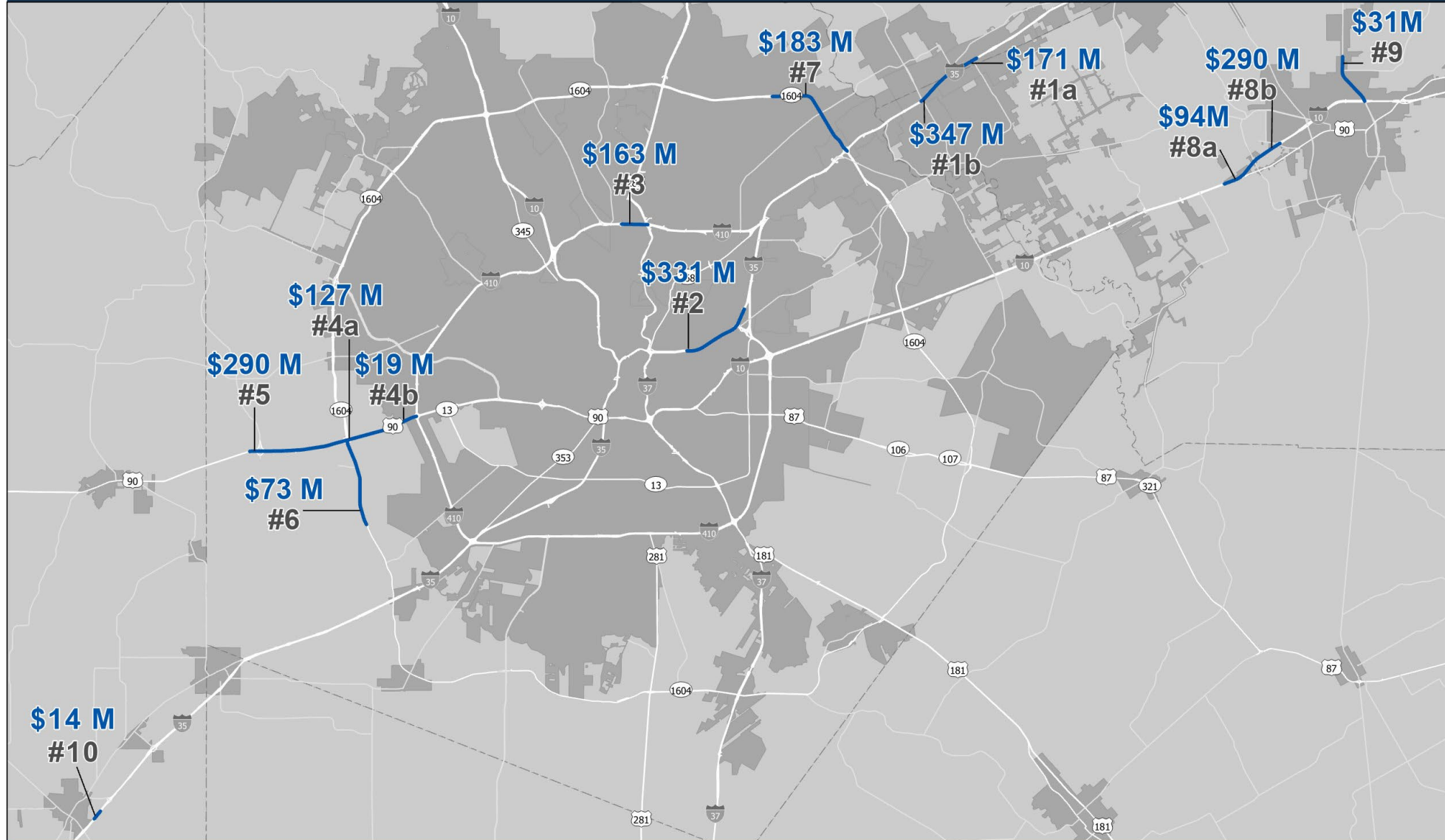
San Antonio 10-Year Planning Targets by Category



TxDOT Funding Categories:

- 1 Preventive Maintenance & Rehabilitation
- 2 Metropolitan & Urban Area Corridor Projects
- 3 Non-Traditionally Funded Transportation Projects
- 4 Statewide Connectivity Corridor Projects
- 5 Congestion Mitigation & Air Quality Improvement
- 6 Structures Replacement & Rehabilitation
- 7 Metropolitan Mobility & Rehabilitation
- 8 Safety
- 9 Transportation Alternatives Program
- 10 Supplemental Transportation Projects
- 11 District Discretionary
- 12 Strategic Priority

2025 UTP Listed Projects

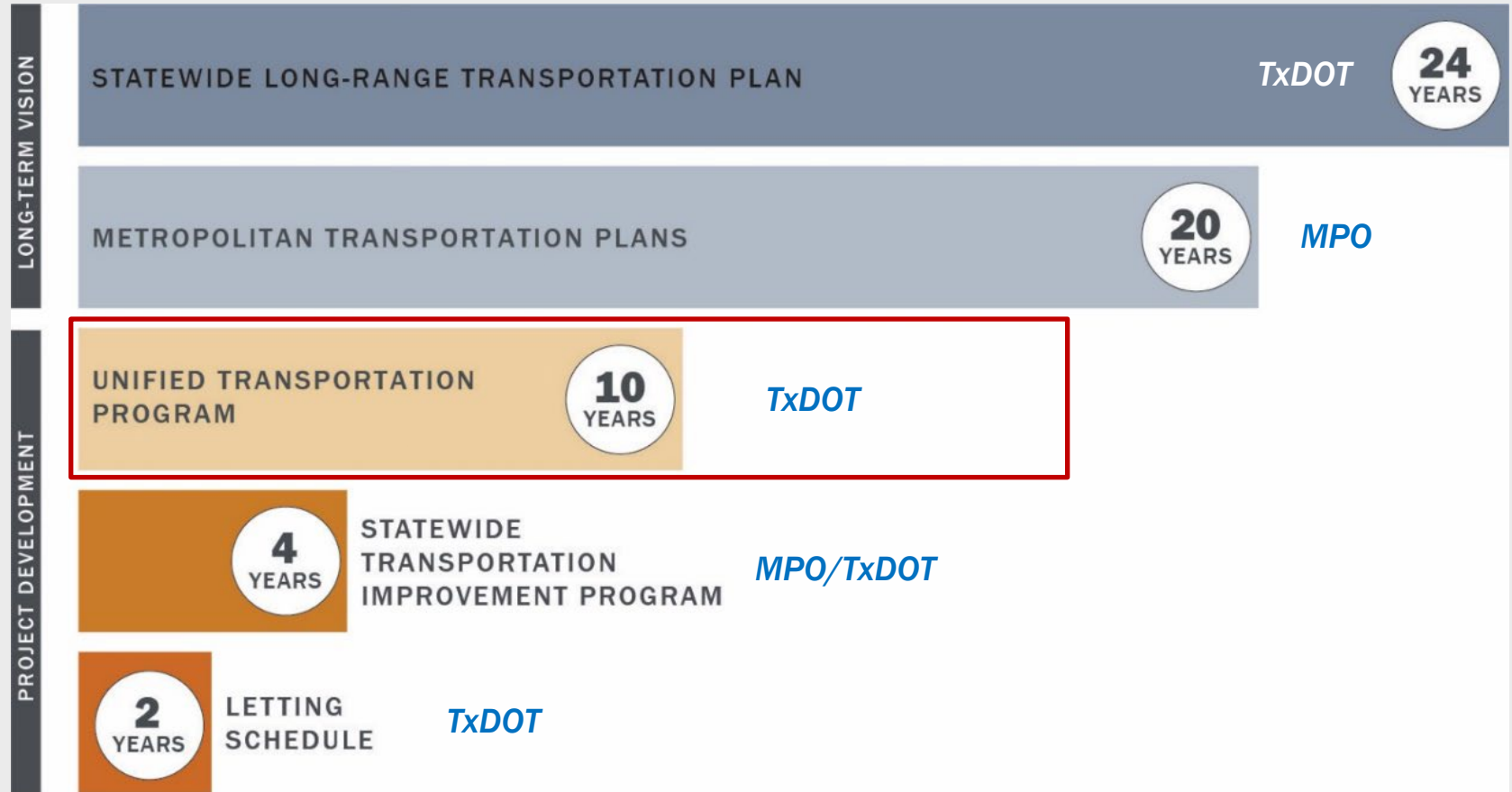


Planning Documents

- STIP
 - Funded Projects

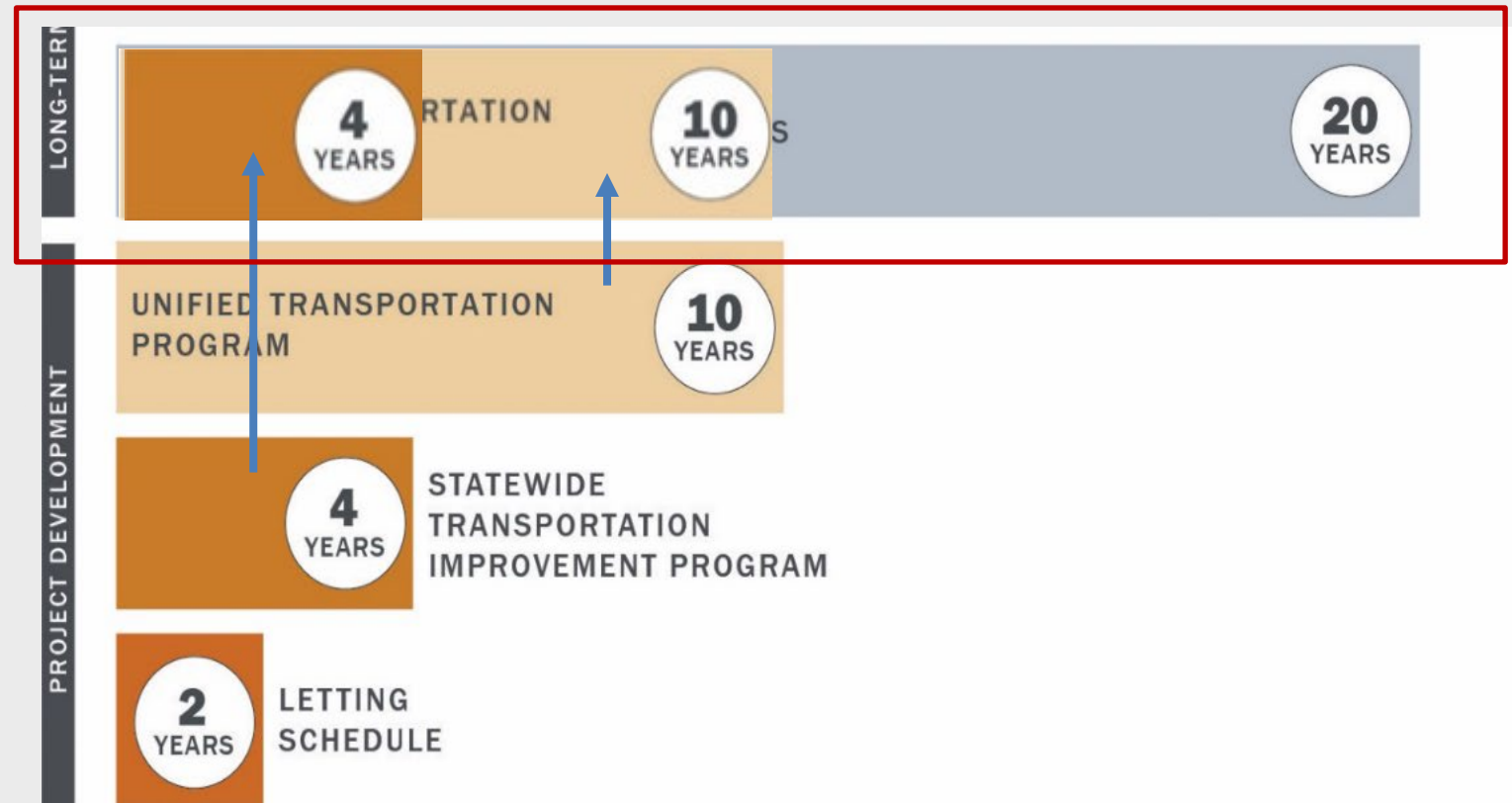
- UTP
 - Funded Projects
 - Partially Funded Projects
 - Unfunded Projects

- MTP
 - Unfunded
 - Projects outside of UTP

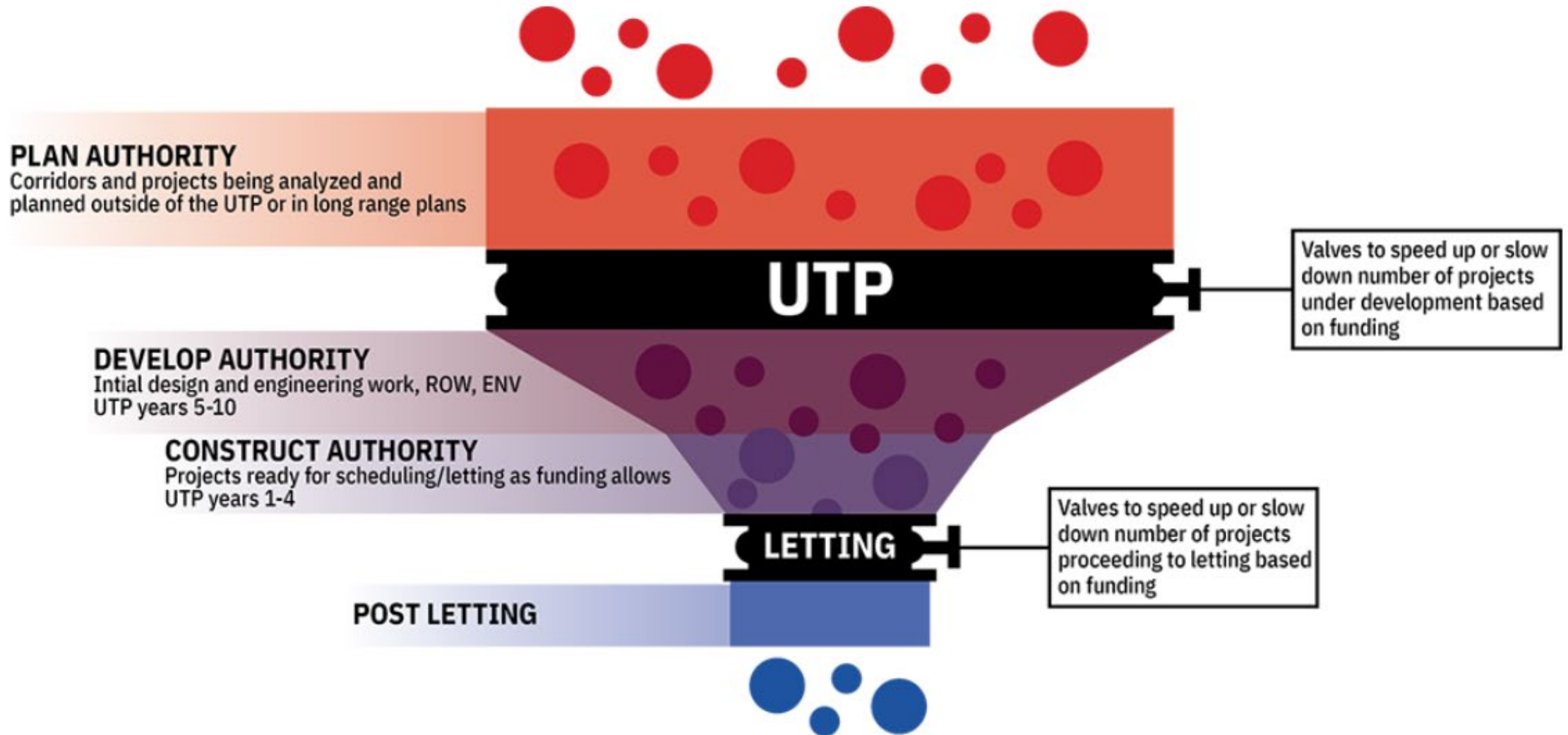


Planning Documents

- Consistency of Plans
 - Ensure alignment of Plans
 - STIP, UTP, MTP
 - Reduces risk in conformity analysis
 - Allows project readiness to progress for large-scale corridors
 - Creates flexibility for funding & project acceleration opportunities



TxDOT's Three Major Stages of Project Advancement





2026 AAMPO List

AAMPO Priority List

- Priorities Shown are Not Final
- Consistent with previous UTP years
- Focused on funding partially funded projects
- 41 Projects within AAMPO Boundaries
- Project Readiness

Roadway	Limits From	To	Prop Priority
IH 35	IH 410 S	IH 410 N	-
IH 410	IH 35/IH 410 S Interchange	FM 78	-
SL 1604	2.0 Miles W of US 281	Redland Rd	-
SL 1604	Redland Rd	Judson Rd	-
SL 1604	Martinez Creek	FM 1346 - Houston St	-
IH 35	N. Walters St.	IH 410 S	1
US 90	0.8 Miles W of IH 410	IH 410	2
US 90	LP 1604	0.8 Miles W of IH 410	2
US 90	SH 211	LP 1604	3
SH 123	Cordova Ln	IH 10	4
IH 410	at US 281/San Pedro		5
SL 1604	Macdona-Lacoste Rd	US 90 W	6
IH 35	FM 3009	Guadalupe / Comal County Line	7
IH 35	Guadalupe / Comal County Line	FM 1103	7
SL 1604	Judson Rd	IH 35 North	8
IH 10	US 90A	FM 464	9
IH 10	Pioneer Road	US 90A	9
IH 410	at IH 10 E		10
SL 1604	FM 78	Rocket Ln	11
IH 410	US 90	IH 35 S	12
IH 35	FM 1103	SL 337	13
SH 16	IH 410	Guilbeau Rd	14
SH 46	IH 35	Comal/Guadalupe County Line	15
SH 211	FM 1957	US 90	16
FM 1957	CR 381	Bexar / Medina County Line	17
FM 1957	Medina / Bexar County Line	SH 211	17
US 281	Bexar/Comal CL	SH 46	18
SH 173	US 90	0.1 Mi North of CR 5710	19
IH 10	FM 465	Pioneer Road	20
FM 3351	IH 10	Desperado Way	21
IH 10	Bexar/Kendall County Line	FM 3351	22
IH 10	0.25 Mi W of Bexar/Kendall County Line	Bexar/Kendall County Line	23
IH 10	SH 46	0.25 Mi W of Bexar / Kendall County Line	23
SL 1604	Rocket Ln	IH 10 East	24
SH 16	Guilbeau Rd	SL 1604	25
SL 1604	SH 16	W Military Dr	26
IH 10	SH 123	SH 130	27
IH 35	Guadalupe River	FM 1103	28
IH 35	Guadalupe River	Hays / Comal County Line	29
IH 410	at SH 151		30
IH 410	at IH 10 E		31
IH 410	at US 90 West		32
IH 410	at IH 10 E		33
SH 46	Bentwood Dr	FM 3159	34
IH 10	at SL 1604 NE		35
SL 1604	IH 35 S	0.7 Mi North of FM 2536	36
SL 1604	0.7 Mi North of FM 2536	Macdona-Lacoste Rd	36
IH 410	Ingram	FM 1535	37
SL 1604	W Military Dr	US 90	38
SH 46	Bulverde Rd	Farhills Dr	39
SH 46	Comal/Guadalupe County Line	IH 10E	40
US 90	SH 211	FM 471S	41

AAMPO Priority List

- **Blue** – Under Construction
- **Green** – Fully Funded
- **Yellow** – Partially Funded

Roadway	Limits From	To	Prop Priority
IH 35	IH 410 S	IH 410 N	-
IH 410	IH 35/IH 410 S Interchange	FM 78	-
SL 1604	2.0 Miles W of US 281	Redland Rd	-
SL 1604	Redland Rd	Judson Rd	-
SL 1604	Martinez Creek	FM 1346 - Houston St	-
IH 35	N. Walters St.	IH 410 S	1
US 90	0.8 Miles W of IH 410	IH 410	2
US 90	LP 1604	0.8 Miles W of IH 410	2
US 90	SH 211	LP 1604	3
SH 123	Cordova Ln	IH 10	4
IH 410	at US 281/San Pedro		5
SL 1604	Macdona-Lacoste Rd	US 90 W	6
IH 35	FM 3009	Guadalupe / Comal County Line	7
IH 35	Guadalupe / Comal County Line	FM 1103	7
SL 1604	Judson Rd	IH 35 North	8
IH 10	US 90A	FM 464	9
IH 10	Pioneer Road	US 90A	9

Project Readiness

- Green – Complete
- Orange – In Progress
- Purple – Has Not Started

Roadway	Limits From	To	Prop Priority	ENV Clear	ROW	PS&E
IH 35	N. Walters St.	IH 410 S	1	Clear	Clear	100%
US 90	0.8 Miles W of IH 410	IH 410	2	Clear	Clear	100%
US 90	LP 1604	0.8 Miles W of IH 410	2	Clear	Clear	100%
US 90	SH 211	LP 1604	3	Clear	Clear	60%
SH 123	Cordova Ln	IH 10	4	Clear	Clear	60%
IH 410	at US 281/San Pedro		5	Clear	Clear	60%
SL 1604	Macdona-Lacoste Rd	US 90 W	6	Clear	Clear	100%
IH 35	FM 3009	Guadalupe / Comal County Line	7	Clear	Clear	100%
IH 35	Guadalupe / Comal County Line	FM 1103	7	Clear	Clear	100%
SL 1604	Judson Rd	IH 35 North	8	Clear	Clear	30%
IH 10	US 90A	FM 464	9	Clear	Clear	90%
IH 10	Pioneer Road	US 90A	9	Clear	Clear	90%
IH 410	at IH 10 E		10	Clear	Clear	0%
SL 1604	FM 78	Rocket Ln	11	Clear	Clear	0%
IH 410	US 90	IH 35 S	12	Clear	Clear	0%
IH 35	FM 1103	SL 337	13	30%	0%	0%
SH 16	IH 410	Guilbeau Rd	14	60%	0%	0%
SH 46	IH 35	Comal/Guadalupe County Line	15	90%	0%	0%
SH 211	FM 1957	US 90	16	30%	Clear	0%
FM 1957	CR 381	Bexar / Medina County Line	17	30%	0%	0%
FM 1957	Medina / Bexar County Line	SH 211	17	30%	0%	0%
US 281	Bexar/Comal CL	SH 46	18	90%	0%	0%
SH 173	US 90	0.1 Mi North of CR 5710	19	60%	Clear	0%
IH 10	FM 465	Pioneer Road	20	Clear	Clear	0%
FM 3351	IH 10	Desperado Way	21	60%	0%	0%
IH 10	Bexar/Kendall County Line	FM 3351	22	Clear	Clear	0%
IH 10	0.25 Mi W of Bexar/Kendall County Line	Bexar/Kendall County Line	23	Clear	Clear	0%
IH 10	SH 46	0.25 Mi W of Bexar / Kendall County Line	23	Clear	Clear	0%
SL 1604	Rocket Ln	IH 10 East	24	Clear	Clear	0%
SH 16	Guilbeau Rd	SL 1604	25	60%	0%	0%
SL 1604	SH 16	W Military Dr	26	60%	0%	0%
IH 10	SH 123	SH 130	27	Clear	Clear	0%
IH 35	Guadalupe River	FM 1103	28	Clear	Clear	0%
IH 35	Guadalupe River	Hays / Comal County Line	29	Clear	Clear	0%
IH 410	at SH 151		30	Clear	Clear	0%
IH 410	at IH 10 E		31	Clear	Clear	0%
IH 410	at US 90 West		32	Clear	Clear	0%
IH 410	at IH 10 E		33	Clear	Clear	0%
SH 46	Bentwood Dr	FM 3159	34	Clear	Clear	0%
IH 10	at SL 1604 NE		35	Clear	Clear	0%
SL 1604	IH 35 S	0.7 Mi North of FM 2536	36	30%	0%	0%
SL 1604	0.7 Mi North of FM 2536	Macdona-Lacoste Rd	36	30%	0%	0%
IH 410	Ingram	FM 1535	37	10%	0%	0%
SL 1604	W Military Dr	US 90	38	10%	0%	0%
SH 46	Bulverde Rd	Farhills Dr	39	60%	0%	0%
SH 46	Comal/Guadalupe County Line	IH 10E	40	90%	0%	0%
US 90	SH 211	FM 471S	41	10%	0%	0%

Next Steps

- Implementation Plans

- Break Out Projects

- Better Chance of Funding

- Faster Implementation

- Methodical and consistent construction

- Update Projects in MTP

- AAMPO Resolution of UTP Candidate Priority Project List

Roadway	Limits From	To	Prop Priority
IH 410	at IH 10 E		10
SL 1604	FM 78	Rocket Ln	11
IH 410	US 90	IH 35 S	12
IH 35	FM 1103	SL 337	13
SH 16	IH 410	Guilbeau Rd	14
SH 46	IH 35	Comal/Guadalupe County Line	15
SH 211	FM 1957	US 90	16
FM 1957	CR 381	Bexar / Medina County Line	17
FM 1957	Medina / Bexar County Line	SH 211	17
US 281	Bexar/Comal CL	SH 46	18
SH 173	US 90	0.1 Mi North of CR 5710	19
IH 10	FM 465	Pioneer Road	20
FM 3351	IH 10	Desperado Way	21
IH 10	Bexar/Kendall County Line	FM 3351	22
IH 10	0.25 Mi W of Bexar/Kendall County Line	Bexar/Kendall County Line	23
IH 10	SH 46	0.25 Mi W of Bexar / Kendall County Line	23
SL 1604	Rocket Ln	IH 10 East	24
SH 16	Guilbeau Rd	SL 1604	25
SL 1604	SH 16	W Military Dr	26
IH 10	SH 123	SH 130	27
IH 35	Guadalupe River	FM 1103	28
IH 35	Guadalupe River	Hays / Comal County Line	29
IH 410	at SH 151		30
IH 410	at IH 10 E		31
IH 410	at US 90 West		32
IH 410	at IH 10 E		33
SH 46	Bentwood Dr	FM 3159	34
IH 10	at SL 1604 NE		35
SL 1604	IH 35 S	0.7 Mi North of FM 2536	36
SL 1604	0.7 Mi North of FM 2536	Macdona-Lacoste Rd	36
IH 410	Ingram	FM 1535	37
SL 1604	W Military Dr	US 90	38
SH 46	Bulverde Rd	Farhills Dr	39
SH 46	Comal/Guadalupe County Line	IH 10E	40
US 90	SH 211	FM 471S	41

Next Steps

- Implementation Plans

- Break Out Projects

- Better Chance of Funding

- Faster Implementation

- Methodical and consistent construction

- Update Projects in MTP

- AAMPO Resolution of UTP Candidate Priority Project List

Roadway	Limits From	To	Prop Priority
IH 410	at IH 10 E		10
SL 1604	FM 78	Rocket Ln	11
IH 410	US 90	IH 35 S	12
IH 35	FM 1103	SL 337	13
SH 16	IH 410	Guilbeau Rd	14
SH 46	IH 35	Comal/Guadalupe County Line	15
SH 211	FM 1957	US 90	16
FM 1957	CR 381	Bexar / Medina County Line	17
FM 1957	Medina / Bexar County Line	SH 211	17
US 281	Bexar/Comal CL	SH 46	18
SH 173	US 90	0.1 Mi North of CR 5710	19
IH 10	FM 465	Pioneer Road	20
FM 3351	IH 10	Desperado Way	21
IH 10	Bexar/Kendall County Line	FM 3351	22
IH 10	0.25 Mi W of Bexar/Kendall County Line	Bexar/Kendall County Line	23
IH 10	SH 46	0.25 Mi W of Bexar / Kendall County Line	23
SL 1604	Rocket Ln	IH 10 East	24
SH 16	Guilbeau Rd	SL 1604	25
SL 1604	SH 16	W Military Dr	26
IH 10	SH 123	SH 130	27
IH 35	Guadalupe River	FM 1103	28
IH 35	Guadalupe River	Hays / Comal County Line	29
IH 410	at SH 151		30
IH 410	at IH 10 E		31
IH 410	at US 90 West		32
IH 410	at IH 10 E		33
SH 46	Bentwood Dr	FM 3159	34
IH 10	at SL 1604 NE		35
SL 1604	IH 35 S	0.7 Mi North of FM 2536	36
SL 1604	0.7 Mi North of FM 2536	Macdona-Lacoste Rd	36
IH 410	Ingram	FM 1535	37
SL 1604	W Military Dr	US 90	38
SH 46	Bulverde Rd	Farhills Dr	39
SH 46	Comal/Guadalupe County Line	IH 10E	40
US 90	SH 211	FM 471S	41



Connecting you with Texas



 Nextdoor