



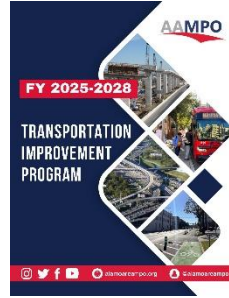
Mobility 2050

Population and Employment Demographics

Technical Advisory Committee
September 5, 2025



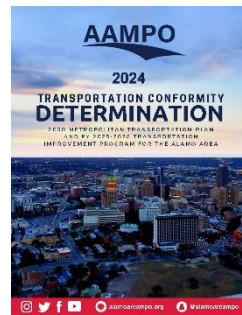
AAMPO Plans and Documents



Transportation Improvement Program (TIP) Funded transportation projects within a four-year timeframe.



Metropolitan Transportation Plan (MTP) Future goals, strategies and transportation projects for 20+ years.

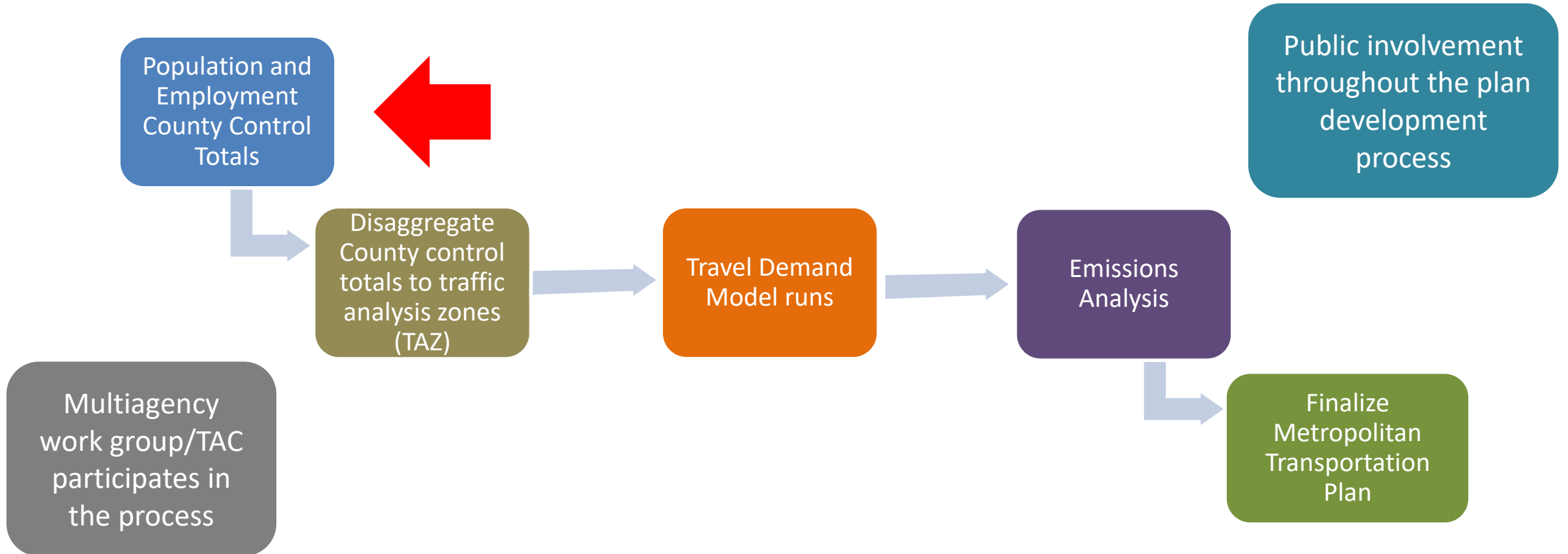


Transportation Conformity Document (TCD) Evaluates future transportation projects to ensure they cause no further harm to air quality; approved through a significant interagency consultation process.



- Covers a time period of **twenty plus years** (*Mobility 2050*)
- Formally updated, at a minimum, **every four years**
- **Financially constrained**
- **Developed cooperatively** among the partner agencies
- **Amended concurrently** with the Transportation Improvement Program (TIP) to ensure consistency.

General MTP Planning Process





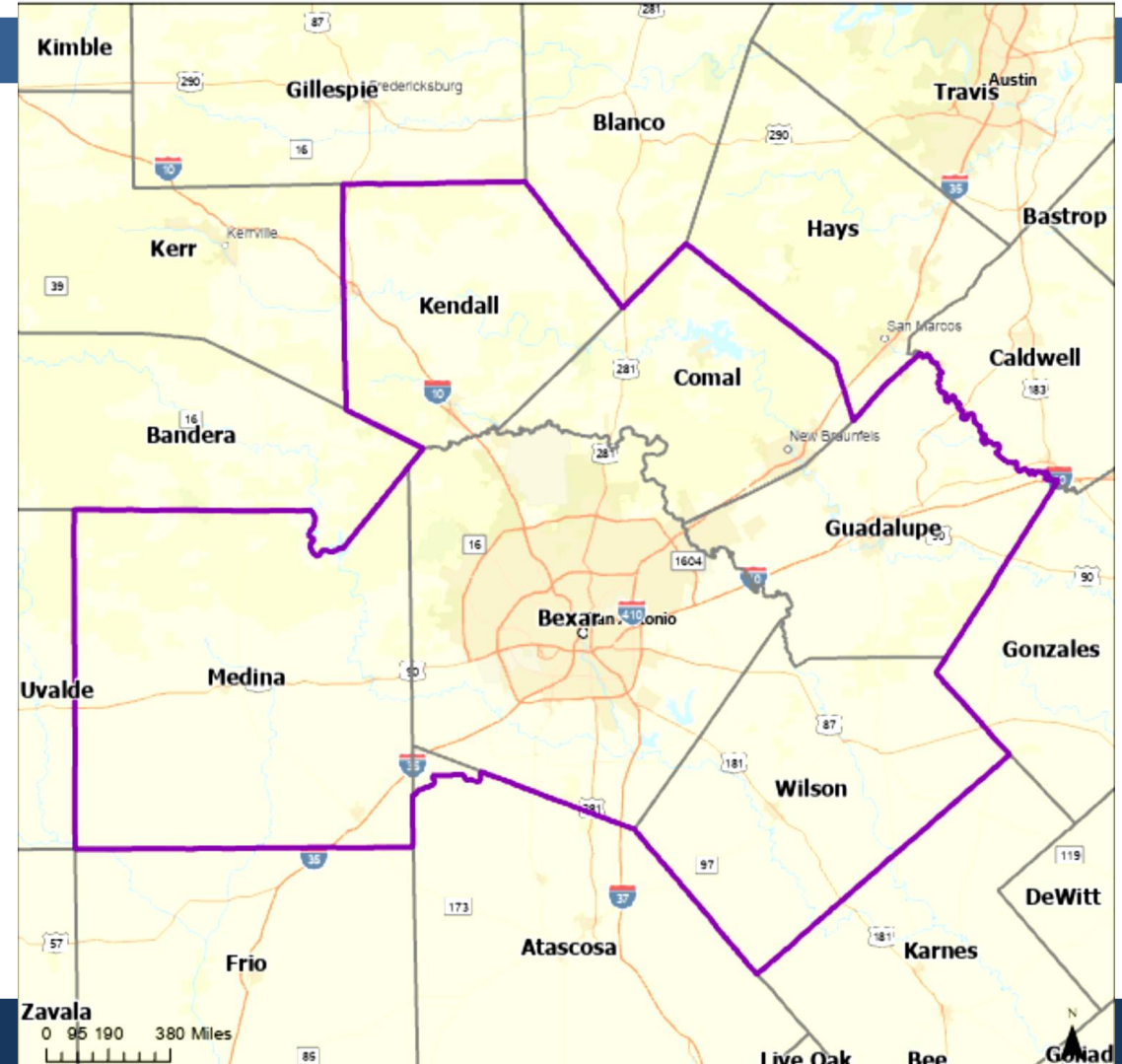
Demographic Development Background

- The basis of any planning effort rests primarily on a **determination of the area's base year demographics** (population, employment, household income) **and future projections** of these demographics
- The process for forecasting future growth in population and employment is **not an exact science**
- The COVID-19 **pandemic significantly impacted** the Texas economy, causing a sharp downturn in early 2020. However, the state's economy has demonstrated a **strong recovery** since then.

- The tendency is to be more comfortable with the recent trends
 - If the **economy is doing well** and jobs and housing are expanding, the tendency is to select an **optimistic forecast**.
 - If the current or most recent trend is decreasing or if a **flat economy exists** there is a tendency to select a **more conservative forecast**
- If a conservative approach is taken and selected **control totals are too low** then **the risk is to be behind in planning** for needed infrastructure. If the **control totals are too optimistic**, this could result in a **false or premature justification** for roadway and/or transit infrastructure improvements.

Model Area Boundary (MAB)

- Bexar County
- Comal County
- Guadalupe County
- Kendall County
- Medina County
- Atascosa (small portion)
- *Wilson County (AAMPO MSA)*



AAMPO Proposed Population Projections

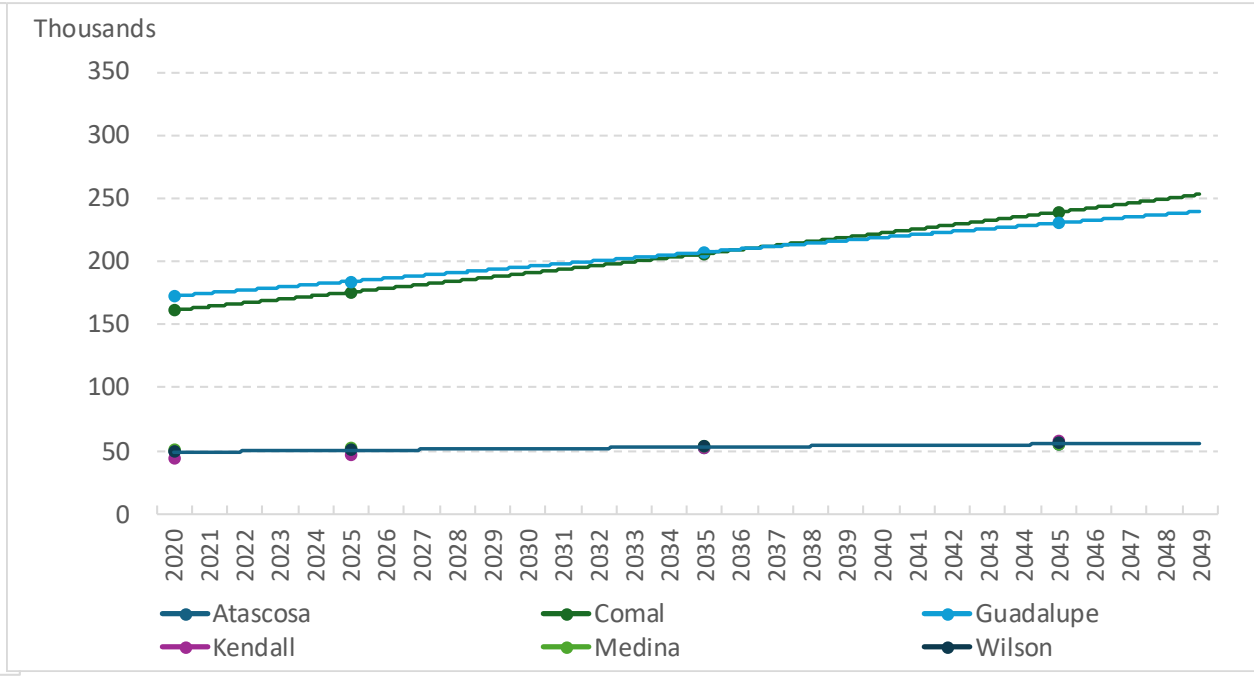
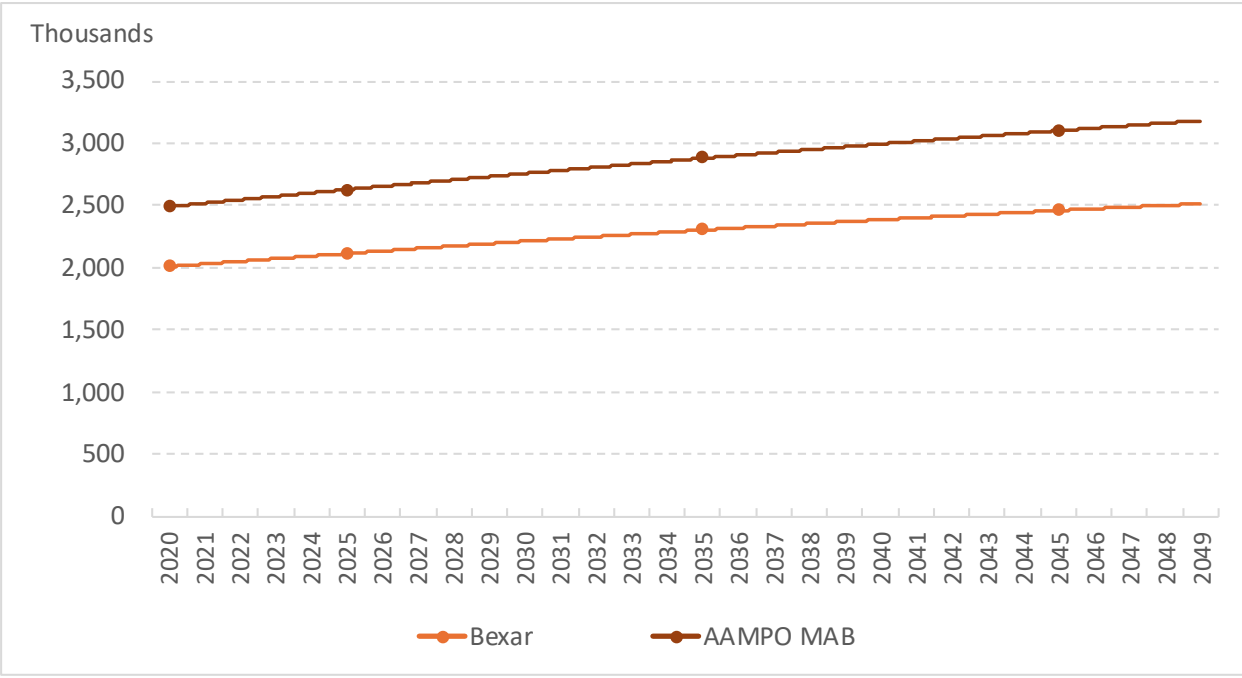
County	2020	2025	2035	2045	2050
Atascosa	48,980	51,200	55,350	59,440	61,470
Bexar	2,009,320	2,153,580	2,454,090	2,737,100	2,865,830
Comal	161,500	191,430	267,750	371,030	434,240
Guadalupe	172,710	193,550	241,540	296,620	326,150
Kendall	44,280	49,980	63,200	79,710	89,670
Medina	50,750	52,750	56,230	59,080	60,150
Wilson	49,750	52,770	58,910	64,970	67,970
Total	2,537,290	2,745,260	3,197,070	3,667,950	3,905,480
AAMPO MAB	2,492,570	2,698,520	3,146,540	3,613,690	3,849,360

Note: MAB (Model Area Boundary)

Source: AAMPO 2023-2050 Control Total Memo developed by UTSA – IDSER/Texas Demographic Center



Population Trend and Forecast

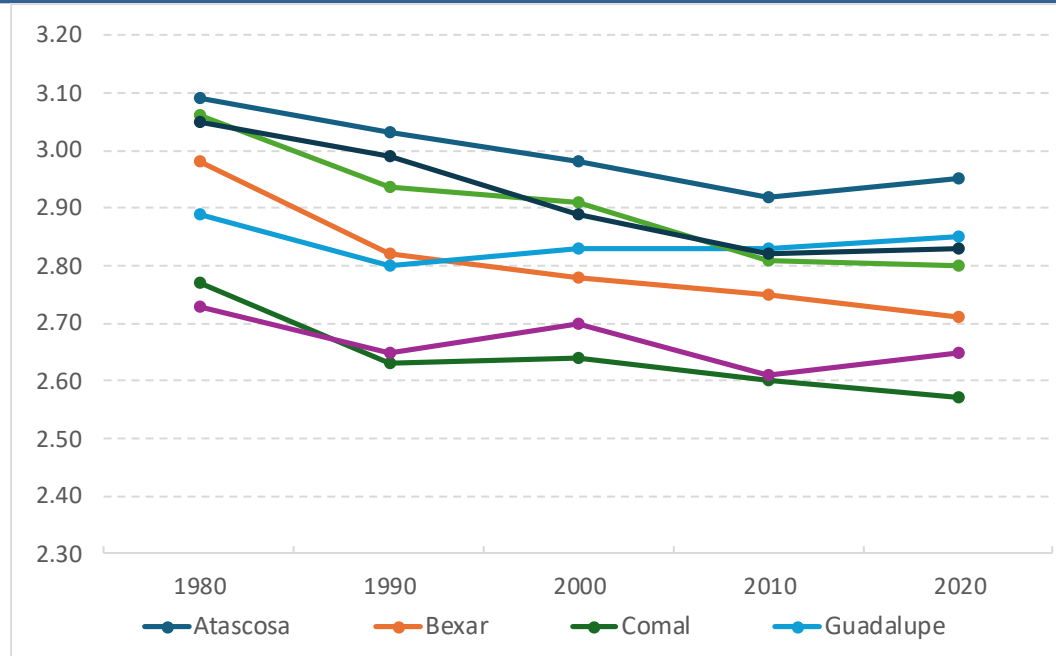


Note: MAB (Model Area Boundary)

Source: AAMPO 2023-2050 Control Total Memo developed by UTSA – IDSER/Texas Demographic Center 9



Average Household Size Trend and Forecast



Year	Atascosa	Bexar	Comal	Guadalupe	Kendall	Medina	Wilson
1980	3.09	2.98	2.77	2.89	2.73	3.06	3.05
1990	3.03	2.82	2.63	2.80	2.65	2.94	2.99
2000	2.98	2.78	2.64	2.83	2.70	2.91	2.89
2010	2.92	2.75	2.60	2.83	2.61	2.81	2.82
2020	2.95	2.71	2.57	2.85	2.65	2.80	2.83



Previous vs. Proposed Population Forecasts

Previous Population Forecast (2020)

County	2020	2025	2035	2045	2050
Atascosa	*	*	*	*	*
Bexar	2,093,502	2,297,072	2,706,907	3,129,737	3,353,060
Comal	147,330	173,540	241,055	331,132	389,584
Guadalupe	170,266	194,538	249,975	314,214	351,776
Kendall	46,278	55,631	81,405	115,768	137,844
Medina	*	*	*	*	*
Wilson	51,802	56,906	67,397	76,322	80,620

Proposed Population Forecast

County	2020	2025	2035	2045	2050
Atascosa	48,980	51,200	55,350	59,440	61,470
Bexar	2,009,320	2,153,580	2,454,090	2,737,100	2,865,830
Comal	161,500	191,430	267,750	371,030	434,240
Guadalupe	172,710	193,550	241,540	296,620	326,150
Kendall	44,280	49,980	63,200	79,710	89,670
Medina	50,750	52,750	56,230	59,080	60,150
Wilson	49,750	52,770	58,910	64,970	67,970

Source: AAMPO 2023-2050 Control Total Memo developed by UTSA – IDSER/Texas Demographic Center



Proposed Employment Projections

County	2020	2025	2035	2045	2050
Atascosa	12,060	14,390	16,190	17,850	18,640
Bexar	842,990	975,360	1,176,360	1,408,090	1,535,060
Comal	60,910	73,480	107,850	157,870	190,370
Guadalupe	41,960	49,810	70,570	100,790	120,540
Kendall	17,010	20,340	26,770	34,650	39,370
Medina	10,110	10,740	12,960	15,680	17,240
Wilson	8,600	9,350	11,730	14,990	17,060
Total	993,640	1,153,470	1,422,430	1,749,920	1,938,280
AAMPO MAB	981,700	1,136,330	1,400,450	1,720,940	1,904,690

Note: MAB (Model Area Boundary)

Source: AAMPO 2023-2050 Control Total Memo developed by UTSA – IDSER/Texas Demographic Center



Employment to Population Ratios

	2025		2035		2045		2050	
	Lower	Upper	Lower	Upper	Lower	Upper	Lower	Upper
Atascosa	24.5%	31.7%	25.7%	32.9%	26.4%	33.6%	26.7%	33.9%
Bexar	44.2%	46.4%	41.1%	54.8%	38.2%	64.7%	36.9%	70.3%
Comal	37.8%	39.0%	36.3%	44.2%	34.9%	50.2%	34.3%	53.4%
Guadalupe	24.9%	26.6%	23.7%	34.7%	22.6%	45.4%	22.0%	51.9%
Kendall	39.0%	42.4%	40.7%	44.0%	41.8%	45.2%	42.2%	45.6%
Medina	19.8%	20.9%	19.3%	26.8%	18.8%	34.3%	18.6%	38.7%
Wilson	17.1%	18.4%	15.7%	24.2%	14.4%	31.8%	13.8%	36.4%
AAMPO MAB	41.2%	43.1%	38.6%	50.4%	36.1%	59.1%	35.0%	64.0%

← IDSER Low/High Employment to Population Ratios

AAMPO Staff Recommends Mid-point Employment to Population Ratios →

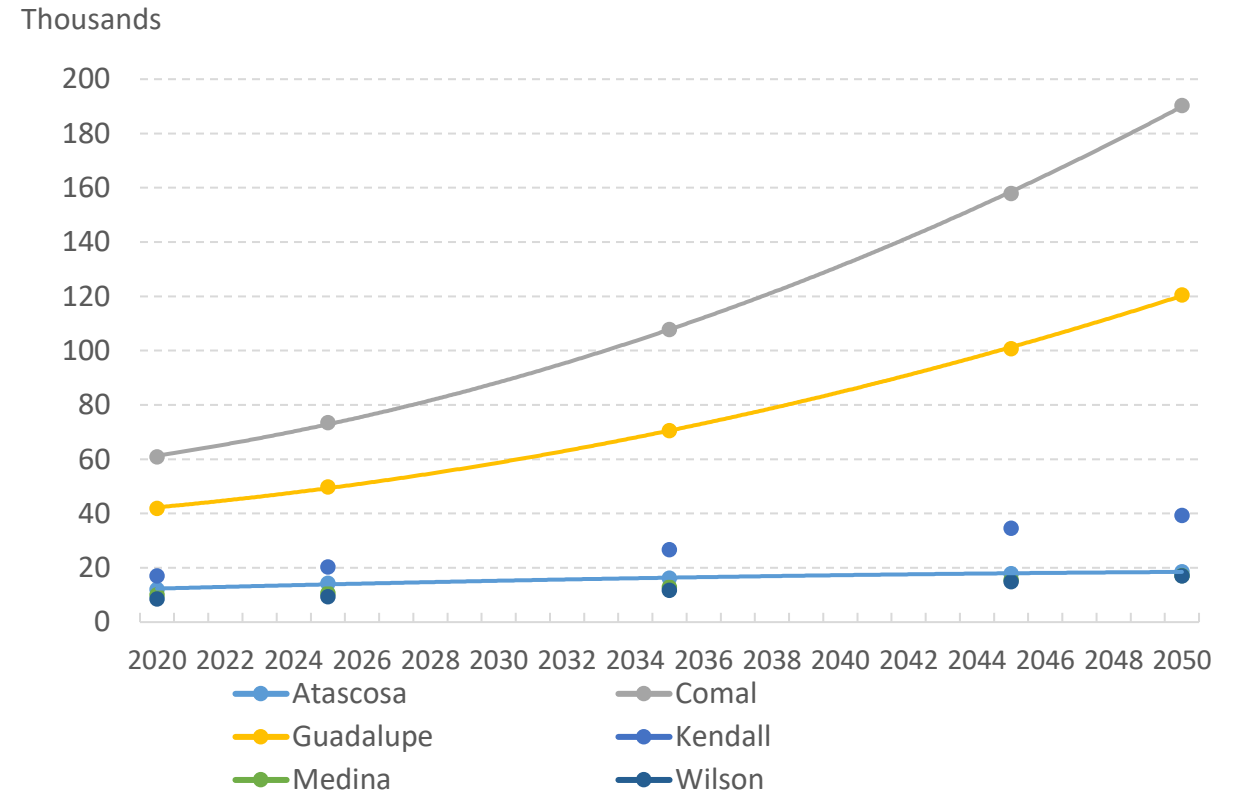
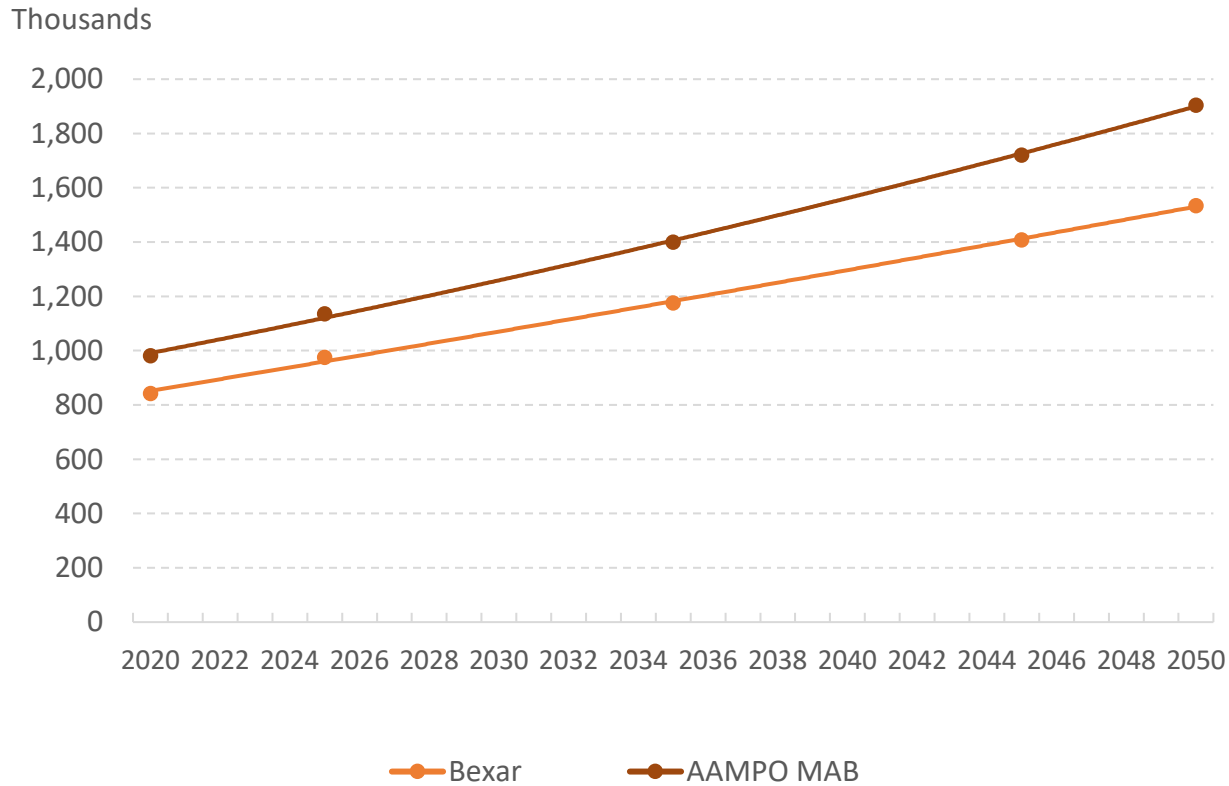
County	2020	2025	2035	2045	2050
Atascosa	24.62%	28.10%	29.3%	30.0%	30.3%
Bexar	41.95%	45.29%	47.9%	51.4%	53.6%
Comal	37.71%	38.38%	40.3%	42.5%	43.8%
Guadalupe	24.30%	25.74%	29.2%	34.0%	37.0%
Kendall	38.41%	40.69%	42.4%	43.5%	43.9%
Medina	19.93%	20.37%	23.0%	26.5%	28.7%
Wilson	17.29%	17.72%	19.9%	23.1%	25.1%
AAMPO MAB	39.39%	42.11%	44.5%	47.6%	49.5%

Note: MAB (Model Area Boundary)

Source: AAMPO 2023-2050 Control Total Memo developed by UTSA – IDSER/Texas Demographic Center



Employment Trend and Forecast



Note: MAB (Model Area Boundary)

Source: AAMPO 2023-2050 Control Total Memo developed by UTSA – IDSER/Texas Demographic Center¹⁴



Previous vs. Proposed Employment Forecasts

Previous Employment Forecast (2020)

County	2020	2025	2035	2045	2050
Atascosa	*	*	*	*	*
Bexar	1,300,337	1,426,780	1,681,341	1,943,974	2,082,686
Comal	92,497	108,952	151,339	207,891	244,589
Guadalupe	71,100	81,235	104,385	131,209	146,895
Kendall	33,318	40,052	58,608	83,348	99,242
Medina	*	*	*	*	*
Wilson	18,793	20,644	24,450	27,688	29,247

Proposed Employment Forecast

County	2020	2025	2035	2045	2050
Atascosa	12,060	14,390	16,190	17,850	18,640
Bexar	842,990	975,360	1,176,360	1,408,090	1,535,060
Comal	60,910	73,480	107,850	157,870	190,370
Guadalupe	41,960	49,810	70,570	100,790	120,540
Kendall	17,010	20,340	26,770	34,650	39,370
Medina	10,110	10,740	12,960	15,680	17,240
Wilson	8,600	9,350	11,730	14,990	17,060

Source: AAMPO 2023-2050 Control Total Memo developed by UTSA – IDSER/Texas Demographic Center



Proposed County Control Totals

Population

County	2020	2025	2035	2045	2050
Atascosa	48,980	51,200	55,350	59,440	61,470
Bexar	2,009,320	2,153,580	2,454,090	2,737,100	2,865,830
Comal	161,500	191,430	267,750	371,030	434,240
Guadalupe	172,710	193,550	241,540	296,620	326,150
Kendall	44,280	49,980	63,200	79,710	89,670
Medina	50,750	52,750	56,230	59,080	60,150
Wilson	49,750	52,770	58,910	64,970	67,970
Total	2,537,290	2,745,260	3,197,070	3,667,950	3,905,480
AAMPO MAB	2,492,570	2,698,520	3,146,540	3,613,690	3,849,360

Employment

County	2020	2025	2035	2045	2050
Atascosa	12,060	14,390	16,190	17,850	18,640
Bexar	842,990	975,360	1,176,360	1,408,090	1,535,060
Comal	60,910	73,480	107,850	157,870	190,370
Guadalupe	41,960	49,810	70,570	100,790	120,540
Kendall	17,010	20,340	26,770	34,650	39,370
Medina	10,110	10,740	12,960	15,680	17,240
Wilson	8,600	9,350	11,730	14,990	17,060
Total	993,640	1,153,470	1,422,430	1,749,920	1,938,280
AAMPO MAB	981,700	1,136,330	1,400,450	1,720,940	1,904,690

Note: MAB (Model Area Boundary)

Source: AAMPO 2023-2050 Control Total Memo developed by UTSA – IDSER/Texas Demographic Center

Motion to approve the proposed county control totals for population and employment, and recommend adoption to the Transportation Policy Board, for the development of the *Mobility 2050* Update.

Travis Nedrich
Regional Transportation Modeler
nedrich@alamoareampo.org
210-230-6912