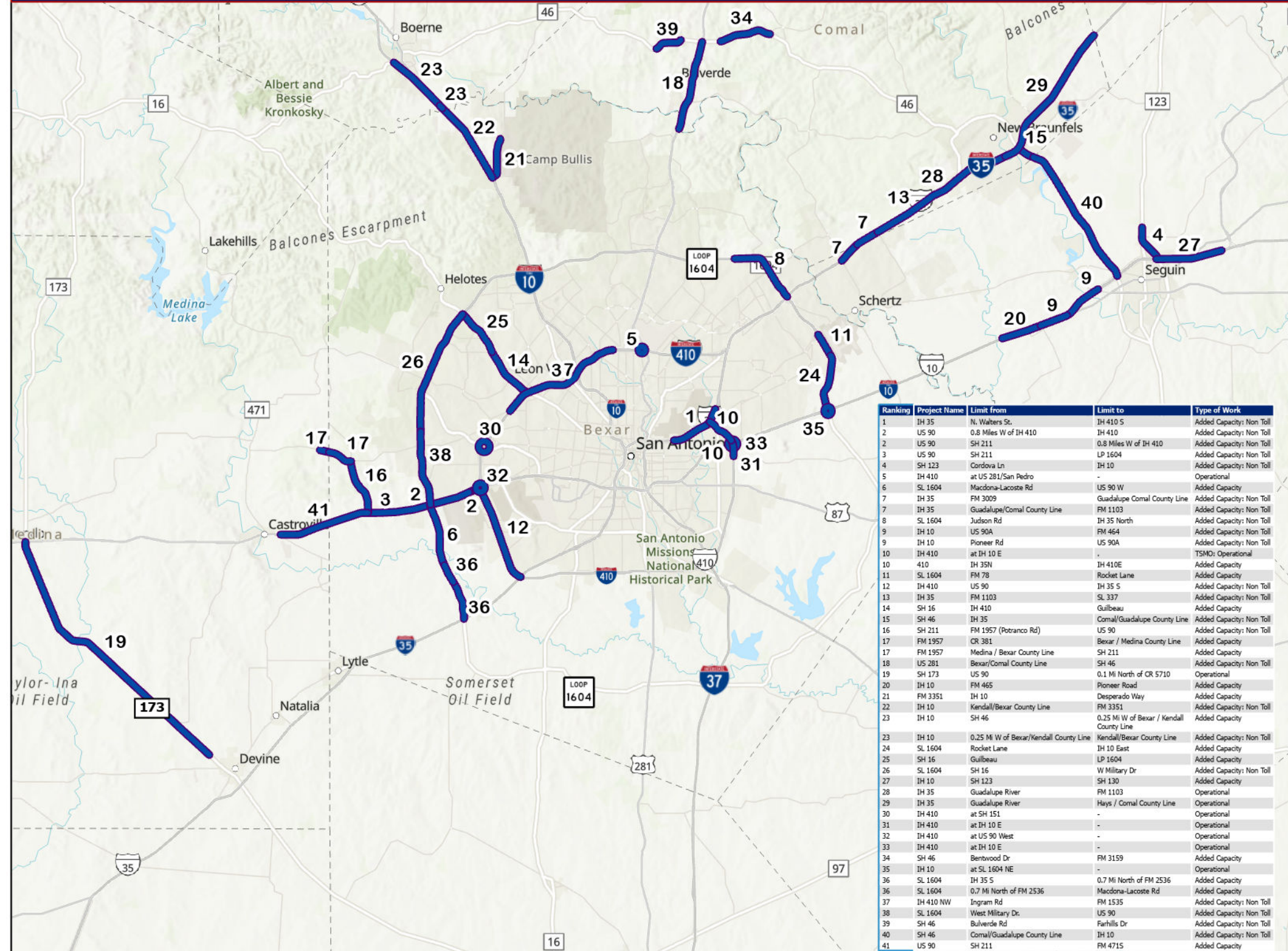


Alamo Area Metropolitan Planning Organization - TxDOT FY 2026 Unified Transportation Program



Ranking	Project Name	Limit from	Limit to	Type of Work
1	IH 35	N. Walters St.	IH 410 S	Added Capacity: Non Toll
2	US 90	0.8 Miles W of IH 410	IH 410	Added Capacity: Non Toll
2	US 90	SH 211	0.8 Miles W of IH 410	Added Capacity: Non Toll
3	US 90	SH 211	LP 1604	Added Capacity: Non Toll
4	SH 123	Cordova Ln	IH 10	Added Capacity: Non Toll
5	IH 410	at US 281/San Pedro	-	Operational
6	SL 1604	Macdona-Lacoste Rd	US 90 W	Added Capacity
7	IH 35	FM 3009	Guadalupe Comal County Line	Added Capacity: Non Toll
7	IH 35	Guadalupe/Comal County Line	FM 1103	Added Capacity: Non Toll
8	SL 1604	Judson Rd	IH 35 North	Added Capacity: Non Toll
9	IH 10	US 90A	FM 464	Added Capacity: Non Toll
9	IH 10	Pioneer Rd	US 90A	Added Capacity: Non Toll
10	IH 410	at IH 10 E	-	TSMO: Operational
10	410	IH 35N	IH 410E	Added Capacity
11	SL 1604	FM 78	Rocket Lane	Added Capacity
12	IH 410	US 90	IH 35 S	Added Capacity: Non Toll
13	IH 35	FM 1103	SL 337	Added Capacity: Non Toll
14	SH 16	IH 410	Guilbeau	Added Capacity
15	SH 46	IH 35	Comal/Guadalupe County Line	Added Capacity: Non Toll
16	SH 211	FM 1957 (Potranca Rd)	US 90	Added Capacity: Non Toll
17	FM 1957	CR 381	Bexar / Medina County Line	Added Capacity
17	FM 1957	Medina / Bexar County Line	SH 211	Added Capacity
18	US 281	Bexar/Comal County Line	SH 46	Added Capacity: Non Toll
19	SH 173	US 90	0.1 Mi North of CR 5710	Operational
20	IH 10	FM 465	Pioneer Road	Added Capacity
21	FM 3351	IH 10	Desperado Way	Added Capacity
22	IH 10	Kendall/Bexar County Line	FM 3351	Added Capacity: Non Toll
23	IH 10	SH 46	0.25 Mi W of Bexar / Kendall County Line	Added Capacity
23	IH 10	0.25 Mi W of Bexar/Kendall County Line	Kendall/Bexar County Line	Added Capacity: Non Toll
24	SL 1604	Rocket Lane	IH 10 East	Added Capacity
25	SH 16	Guilbeau	LP 1604	Added Capacity
26	SL 1604	SH 16	W Military Dr	Added Capacity: Non Toll
27	IH 10	SH 123	SH 130	Added Capacity
28	IH 35	Guadalupe River	FM 1103	Operational
29	IH 35	Guadalupe River	Hays / Comal County Line	Operational
30	IH 410	at SH 151	-	Operational
31	IH 410	at IH 10 E	-	Operational
32	IH 410	at US 90 West	-	Operational
33	IH 410	at IH 10 E	-	Operational
34	SH 46	Bentwood Dr	FM 3159	Added Capacity
35	IH 10	at SL 1604 NE	-	Operational
36	SL 1604	IH 35 S	0.7 Mi North of FM 2536	Added Capacity
36	SL 1604	0.7 Mi North of FM 2536	Macdona-Lacoste Rd	Added Capacity
37	IH 410 NW	Ingram Rd	FM 1535	Added Capacity: Non Toll
38	SL 1604	West Military Dr.	US 90	Added Capacity: Non Toll
39	SH 46	Bulverde Rd	Farhills Dr	Added Capacity: Non Toll
40	SH 46	Comal/Guadalupe County Line	IH 10	Added Capacity: Non Toll
41	US 90	SH 211	FM 4715	Added Capacity